

Connecting Albert County

August
2018

Image by Kevin Snair of Creative Imagery

The Hidden Gem in the Heart of Albert County

By Dan Ross

Greetings from the Albert County Museum. The 2018 summer season is in full swing and we are so pleased to be welcoming the flocks of tourists visiting the many world class attractions in our wonderful county.

A few weeks ago, I had the pleasure of giving a tour of the museum to a group of visitors from Texas. Very nice folk and quite insistent that they had

never seen such an amazing and well-preserved array of artifacts and buildings. They told me it was just by luck that they noticed the Victory Cannons from the highway and decided to stop for a photo. One of the ladies exclaimed, "Can you imagine my surprise when I turned away from the cannons and there, right in front of me, was a beautiful display of heritage buildings in all their glory!" She grabbed me by the elbow

August 2018 Featuring:

- ~Connecting Albert County's Political Forum;
- ~The Question of Fracking;
- ~Memoirs of a Road Builder;
- ~Community calendar & more!

and stared at me with her wide blue eyes and said, "You do realize what a jewel you have here!"

A day later, a young couple with their two kids wanted a quick tour of the old Gaol and the Courthouse. Of course, once the kids were hooked with the tales of the rectory and gaol, we toured the exhibits in the Exhibition Hall. While the kids were exploring, the dad pulled me aside and shared, "I've been driving back and forth from Riverside Albert on a daily basis for years. I never knew that this museum was so large and

Continued on page 15

ConnectingAlbertCounty.org



Connecting Albert County

August 2018. Volume 4. No. 8
ISSN 2369-1174/1182 (digital)

Our Mission: To connect rural Albert County through online and print communication.

Connecting Albert County (CAC) Board: Lisa Brown, Joseph Gallant, Kate Merlin, Victoria Stroud

CAC Part-time coordinator/ editor: Janet Wallace

Contributors: Ashlyn Brownell, Deborah Carr, Mike Holland, Jim Kitts, Mindy Liptay, Bob Rochon, Dan Ross, Kevin Snair, Moranda van Geest, Betty Weir, Rebekah Wheaton, James Wilson

To donate funds, submit articles or provide feedback, email info@connectingalbertcounty.org or mail CAC, 8 Forestdale Rd., Riverside-Albert, NB E4H 3Y7

Distribution sites:

Limited numbers of free copies are available at the following:

Hillsborough: Hillsborough Freshmart, Library/Village Office

Riverside-Albert: Albert County Pharmacy, Crooked Creek Convenience, Forest Dale, Albert County Health & Wellness Centre

Alma: Harbour View Market and Restaurant, Fundy General Store

Copies are also at connectingalbertcounty.org/newsletter

The opinions in our newsletter and website do not necessarily reflect the views and opinions of the individuals who make up Connecting Albert County.

We thank Gary Steeves Insurance for their generous gift of printing our newsletter in full colour.

Next deadline: August 15st

Inside this issue

Hidden Gem: Albert County Museum, p1

Connecting Albert County's Political Forum

- ◇ **Introduction, p3**
- ◇ **James Wilson, Independent, p3**
- ◇ **Moranda van Geest, Green, p4**
- ◇ **Mike Holland, PC, p5**
- ◇ **Betty Weir, NDP, p6**

Land & Biodiversity Conservation: Why it's important and how we're doing, p7

Should We Frack in Albert County?, p9

Fundy Roads in the Last Millennium: Flag Girls p12

BACH Charity Golf Tournament p13

Hillsborough Public Library: August Schedule p16

Community Calendar p17

Weekly Events, p19

Supporters of Connecting Albert County, p20

Connecting Albert County

We are a small volunteer-based non-profit group. Throughout the year, we post articles on our website (www.ConnectingAlbertCounty.org) and on Facebook. Each month, we produce a publication (online and in print), like the one you're reading now.

If you like what you see, please consider supporting us. We welcome ads, donations and volunteer help (no computer skills required for some of the tasks). Of course, we also invite submissions—articles, photographs and letters. If you don't like what you read, feel free to send us a letter and share your views.

We provide a forum to share views and stories—please note that the opinions expressed in articles in our publications and on our website do not necessarily reflect the views of our team.

We'd love to hear from you. Please send your ideas, photos, letters and stories to info@connectingalbertcounty.org.

Janet Wallace

Editor/Coordinator

*Connecting Albert County
info@connectingalbertcounty.org*

James Wilson, Independent

My name is James Wilson and I am running as an independent in the riding of Albert. I have lived and worked in Albert County all my life. I've been from one end of the county to the other but am always finding out new things about this place I call home. I will confess that I am an introvert and that public speaking is not my favorite activity and canvassing door-to-door fills me with a fair amount of dread. And here I am running in an election that requires I embrace both of these activities.

So why do this to myself? The simple answer is that it is clear that New Brunswick needs a course correction or things will only get worse. Our young people flee the province in search of work. Our provincial debt balloons to the point of being unpayable as year after year the government fails to balance the books. Vital infrastructure crumbles with little money put into preventing the next bridge being lost or road rendered unusable. If we are not careful New Brunswick will one day be unable to meet even basic obligations to its people. Chances are I will live to see it and that thought terrifies me. It terrifies me more than knocking on a strangers door and engaging them in a conversation about the future of our province does at any rate.

So how do we turn things around? We need to pare down the bureaucracy where it is sensible to do so. Merging New Brunswick's two health authorities would be a good example of redundant administration that should be merged both to cut costs and to ensure an equal level of service in New Brunswick. We need to eliminate unneces-

Connecting Albert County (CAC) invited all candidates running in Albert County to contribute an article. The articles are published in the order they were received. CAC does not endorse any one party nor is responsible for the content of these articles. Our next issue will contain more political ads and details about the upcoming provincial election (Sept.24, 2018).



sary rules and regulations that costs the government to enforce and makes living in New Brunswick more of a hassle than it should be. We need a government that is more forthcoming about the contracts it negotiates and how it spends our money.

You can learn more at facebook.com/james4albert and if you are looking for someone willing to do the hard work of representing the Albert Riding consider voting for me on election day. Together we can rebuild this province!

Moranda van Geest, Green Party

Although born into a Dutch sea-faring family, I've been a farmer all my life. When we came to Canada in 1981, we had little more than a dream, a vision and a goal. We saw potential in a rundown, neglected farm in Elgin. Through hard work and attention to the needs of the land—and with strong community support—we restored it to a thriving dairy farm.

Watching our forests become clearcuts and our lumber profiting off-shore tax havens while people in my community struggled to earn a decent living compelled me to run for political office. To continue destroying our natural environment serves no one. Neither does repeating the same mistakes over and over, hoping for a different outcome.

There are lessons here for our province.

As I travel Albert County talking with residents, many say they feel helpless to create the change they want to see. But we are the government; we can take charge of our destiny.

By working together and reclaiming our right to local decision-making, we can build rural economies based on our strengths; we can manage our assets to meet community needs. A new forest management plan would enable woodlot owners to earn a living and allow communities to benefit from Crown resources, thus creating meaningful work. How long would our fishery remain sustainable if it was managed by a corporation instead of local fishermen?

Supporting local business keeps wealth circulating here instead of disappearing elsewhere. Local decision-making would



give us greater control over infrastructure maintenance, healthcare and educational resources.

Because farming, fishing and forestry are inherent to Albert County, our programs should support our farmers and food suppliers. Tourism offers endless opportunities with a continually-evolving, expanding market. But tourism, too, depends upon the health of our environment. No one visits an industrial zone.

These principles are at the heart of Green Party policy (tinyurl.com/ybcgy8w3). We believe governments should be collaborators and supporters of sustainable, community-led goals and initiatives, not top-down dictators.

A community thrives when residents are able to meet their own needs and realize their full potential in a sustainable manner. It takes good governance—representing the people, not corporate interests—to realize this goal. We need old wisdom, forward vision and ethical leadership to make this happen. It's time for change.

Mike Holland, Progressive Conservative

Whether it's business, conservation efforts, or politics, Mike Holland has always been up for a challenge!

Farm raised in rural New Brunswick, Mike Holland has been an avid outdoorsperson his whole life. He is the co-founder of the Canadian Wild Turkey Federation, a non-profit organization that is quickly becoming the new face of conservation in Canada.

He also owns a business that sells outdoor gear which he invented. In fact, his company, Resourceful Redneck, was profiled on CBC's Dragon's Den and he was successful in securing a funding partner on the show!

As a tireless advocate for Natural Resources, he wants to use his experience to make the woods, the water, and the wildlife of New Brunswick something we are proud of if he is elected.

He is the father to three adult children and he has a passion for seeing them be able to put down roots in New Brunswick for the long term.

In order for that to become a reality, he feels like it is about time we have a government that puts New Brunswick first for a change! Having worked as an executive assistant in the previous PC government, he worked in five different government departments so he is ready to jump in and get to work with very little training. He will be an MLA that is ready to get down to business on day one!

He feels that the riding of Albert can be an example to the entire province and is looking forward to building upon the world class tourism opportunities that exist, while at the same time putting real effort into developing a rural economy that creates jobs and prosperity in our region.



He feels like the Albert riding is a perfect fit for him to apply his skills, experience and energy as an MLA that will be a part of the team to makes New Brunswick all that it can be.

With your support, Mike Holland, PC candidate for Albert is ready to work for you!

Looking for work, workers or volunteers?

Connecting Albert County posts job opportunities as a free service to local businesses. Visit our job page: connectingalbertcounty.org/jobs.

At connectingalbertcounty.org/volunteer, find out about volunteer opportunities for many groups. For example, Connecting Albert County is looking for a website poster, community liaisons and a calendar coordinator. Computer knowledge is not required for some of these tasks; training will be provided if needed. For details, email Janet Wallace at info@connectingalbertcounty.org.

Betty Weir, NDP

Betty Weir lives in Salisbury with her two girls and works as a bus driver for the Anglophone East School District. She cares about youth, their safety and their development and is very enthusiastic to wear the NDP colors in the upcoming elections. Betty wants to stop privatization of our province, fight for a \$15 minimum wage and offer solutions, like more affordable childcare, to help families who are struggling.

"Being a single mother for several years, I have to work two or three jobs in order to support my family. It's time for this to end, it's time to give a better life to New Brunswick workers and families.

"I am an extremely hard worker and will work hard for you as a MLA for Albert County and do everything in my power to achieve the NDP goals.

"We need to raise minimum wage up to \$15/hour. Service workers, public servants and everyone in the province need better wages. Families are working harder than ever but falling further behind: too many people have to choose between rent and food.

"We spend outrageous money to privatize road construction companies for bad roads. There's been many times that the DTI has proven to them that they can do it cheaper and better but the corruption in the government won't allow this as they need to line their pockets from the privatized companies.

"The NDP plan for childcare in schools is good for families in Albert County. Parents here are looking for a childcare solution that fits into their lives, that works for them,



and is developed specifically for their community, at an affordable cost for families. With a childcare plan like the one proposed by the NDP, parents would be able to feed their kids and maybe have a little extra money to take them to a movie or something. Parents will be able to spend more time with their children and less time working two or three jobs in order to pay for day-care.

"I am a very hard worker and I'm willing to put everything I've got into doing my best. I might be little, but I have a big voice and it's going to be heard!"

Visit **Connecting Albert County's Calendar** at
www.connectingalbertcounty.org/calendar
Read stories about rural Albert County at
www.ConnectingAlbertCounty.org

Land & Biodiversity Conservation:

Why it's important and how we're doing



By Ashlyn Brownell

In 2015, Canada adopted the 2020 Biodiversity Goals and Targets for Canada, putting into action the federal government's commitment to the United Nations Convention on Biodiversity, committed to in 2010. Target 1 states that “by 2020, at least 17% of terrestrial areas and inland water, and 10% of marine and coastal areas of Canada are conserved through networks of protected areas and other effective area-based measures.”

In 2010, 9% of Canada's landscape was protected and since then, we've moved the needle 1.6% to roughly 10.6%. Although progress has been slow, some promising work has been done in the last year: The Pathway to Target 1, a nationwide coordination effort, was launched with input from federal and provincial government ministers, Indigenous leaders, academia, youth, environmental groups and more.

How is New Brunswick doing? New Brunswick is behind the rest of the country, with only 4.7% protected, but the provincial government, private land owners, and Indigenous communities are working together to help New Brunswick meet Canada Target 1. We all know the broad benefit land conservation efforts can provide. New Brunswick's beautiful wilderness has so much to offer in terms of ecosystem services including clean water, fresh air, healthy wildlife habitat, and ecotourism opportunities. By developing management plans that protect the landscape, we can achieve better biodiversity conservation which creates ripple effects including sustainable communities, economic development, and a sense of pride of place.

Land conservation can also help achieve Canada's goals for reconciliation with First Nation peoples by recognizing the importance of Indigenous governance and sustainable management of the resources that exist on their

traditional territories.

The Indigenous Circle of Experts are playing a key role in the leadership of Pathway to Target 1 across the country. Indigenous Protected and Conserved Areas are a form of Indigenous-led land and water protection that represent long-term commitment to conservation, and elevate Indigenous rights and responsibilities.

The UNESCO-designated Fundy Biosphere Reserve is working with local Indigenous and non-Indigenous communities, regional agencies, and the provincial and federal government to support the Pathway to Target 1 goals and to help protect land and conserve biodiversity for generations to come.

To learn more about conservation in New Brunswick and Canada, explore conservation2020canada.ca and the Canadian Parks and Wilderness Association's NB chapter, cpawnsb.org. To learn more about biodiversity close to home, go to fundy-biosphere.ca.




East Coast Kids
Child Care & Learning Centre

Play
Laugh
Learn

Safe & fun environments that offer quality care & programs/activities for children ages 2-12 yrs.

Licensed Centres in Hillsborough & Riverside-Albert
childcare@eastcoastkids.ca 506-962-5868



FARMER BROWN'S GREENHOUSE
• Retail Greenhouse & Market Garden •

Large Selection of Annuals, Perennials & Herbs
Customized Planting Service for Containers & Flower Beds

LISA BROWN (506) 734-1908
farmerbrownsgreenhouse@gmail.com
371 Osborne Corner Rd • Dawson Settlement NB • E4H 2A6

ALBERT COUNTY PHARMACY **Guardian**
Feeling Better Starts Here

Save Smart, Shop Local.

Summertime is here!
Stop in and see us for all your bug repellent and suncare needs.

We also carry Häagen-Dazs and Nestlé ice cream treats!

Store Hours:
Mon-Fri 9am-6pm
Saturdays 9am-5pm

Pharmacist on Duty: Mon-Fri 9am-6pm

We now carry Atlantic Lotto!

ALBERT COUNTY PHARMACY
5883 King Street, Riverside-Albert, NB, E4H 4B5
Ph: (506) 882-2226 Fax: (506) 882-2101

Should We Frack in Albert County?

By Deborah Carr

A September election is looming, and PC Leader Blaine Higgs wants to lift the fracking moratorium for communities that want it. He specifically mentions Sussex and Albert County, although Hillsborough Village Council clearly stated they oppose fracking in their jurisdiction and Riverside-Albert and Alma agree.

Higgs' approach may seem reasonable, but the consequences of oil and gas development affect everyone, whether they support it or not. We all pay for the increased burdens on healthcare, roads and inflated cost of living. Companies lease lands from people who make the decision based on their own financial needs, yet neighbours and community share the impact. The private profits are generally short-lived, because well productivity declines quickly, while environmental degradation often cannot be reversed. This leads to division and conflict, as Beth Nixon knows.

Nixon hosted well sites on her Penobsquis farm and now lives with air pollution from flaring. She's kept records of every toxic spill and incident since the fracking began. Hers was one of 60 families who lost well water after an aquifer began draining through a subterranean crack into the potash mine. Coincidentally, the crack appeared shortly after Corridor

Resources began seismic testing and fracking in the vicinity. It took five years for the affected families to get a new water pipeline.

Nixon was one of the first people WEPAC (Water and Environmental Protection for Albert County) consulted in 2011 after we learned Contact Exploration received approval to bring 31 new and existing wells into production in the Stoney Creek oilfield, and planned to develop more in Hillsborough. Contact Exploration had already drilled/fracked three oilfield wells, drilled two exploratory gas wells outside village limits on the Salem Road and on Fairview Drive. Another exploratory well was drilled in Edgett's Landing within 2 km of both Hillsborough water sources and in close proximity to private wells.

Hillsborough and Stoney Creek are no strangers to extractive industries. Toxic berms

What do you think about fracking? Send your letters and articles about this issue or other concerns to info@connectingalbert-county.org

from the gypsum plant still seep sludge alongside the Petitcodiac River; sinkholes and limestone caves are now part of a recreation area. Old oil and gas wells are hidden throughout the landscape.

The formations targeted for fossil fuel extraction extend from Memramcook to Hillsborough, through Rosevale to Elgin and Penobsquis. Albert County was poised to become a frack zone until the provincial Liberal party's moratorium on fracking.

Documented impacts

Fossil fuel proponents say they've been "fracking for 60 years without incident" and they've "drilled 175,000 wells with no evidence of contamination."



WEPAC March in Riverside Albert

Fake News.

Fact One: Modern fracking technology—a high-intensity, multi-stage operation which combines horizontal drilling and uses massive amounts of water (or gas), mixed with sand and toxic chemical to blast formation rock releasing trapped oil and gas—has ignited this unprecedented drilling frenzy since about 2004. Fracked landscapes look like microchips: a tangle of wellpads, waste ponds, pipelines and roads.

Fact Two: Since 2012, the petroleum industry has repeatedly stated they've safely drilled 175,000 wells, but Alberta alone now has over 450,000 wells and Saskatchewan hopes to overtake them. There are countless cases of property destruction, but when the evidence clearly indicates them, industry usually settles out of court with compensation and gag orders, so the public never hears the truth.

Andrew Nikiforuk has written three books on the industry in Canada. The latest, *Slick Water*, documents industry's track record and the struggles of Jessica Ernst who filed an expensive lawsuit in 2007 after Encana contaminated wa-


ter wells in Rosebud, AB (it's not over yet). He also writes about Diana Daunheimer (also suing the industry) and the Cochranes, Campbells, Hawkwoods, Mildienstiens...all Canadians who have gone public with their experiences. Many others remain silent.

Dr. Emily Eaton studies the impacts of oil and gas extraction on communities in Saskatchewan, calling it the Wild West of Fracking, where government colludes with industry and a culture of silence keeps people from speaking out because a neighbour, friend, or a family member might be an oil worker. She told me one man sought justice for seven years after his daughter became sick from contaminated water. Emily Eaton was the first person he'd ever told.

Leaking wells

Here in Albert County, bad water is common surrounding the century-old Stoney Creek oil fields. But it's often blamed on 'natural occurrences' because the oil- and gas-bearing rock comes close to the surface. How can we be certain?

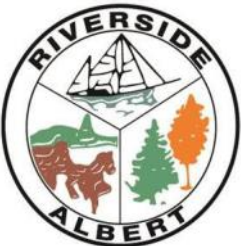
What the industry does know for certain—and has for decades—is that methane and other gases do migrate through well casings, existing fissures and faults to water-bearing rock, and to the surface. A 2018 study says methane emissions from leaking wells are 60% higher than previously thought. Methane is a powerful greenhouse gas contributor to global warming. It's released throughout the entire extraction process via truck traffic, drilling, flaring and leaking wells.



2849 Main St Unit 1 Hillsborough NB E4H 2X7
www.villageofhillsborough.ca

Village of Hillsborough

Tel: (506) 734-3735 Email: hillsboroughnb@rogers.com
Fax: (506) 734-3711



5823 King St., Riverside-Albert
NB E4H 4B4

Village of Riverside-Albert

Fundy Historic Village

506-882-3022
villra@nbnet.nb.ca www.riverside-albert.ca



Moranda van Geest
ALBERT

"Now is the time for change.
You can make it happen."



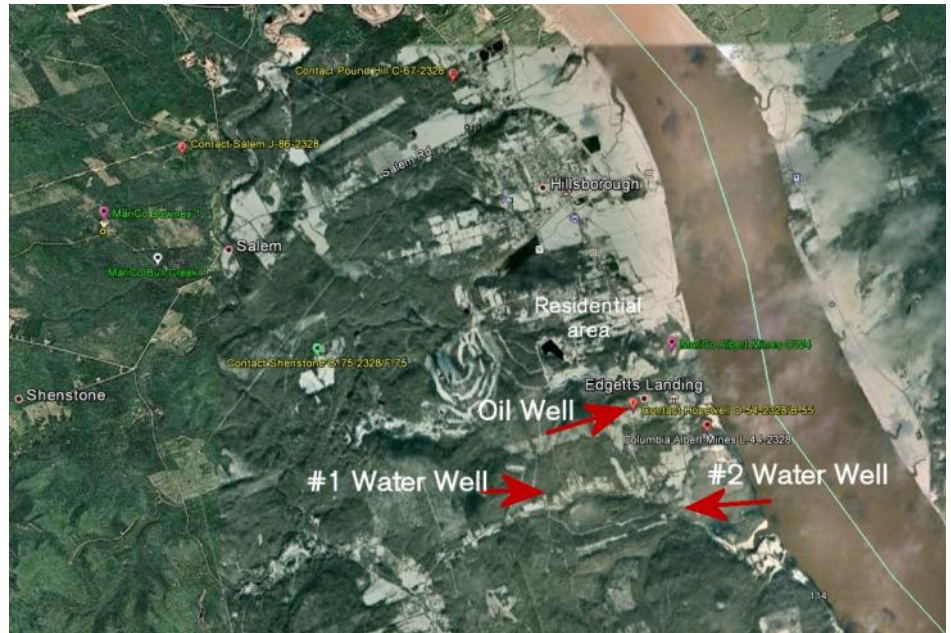
It starts here, at home.

In 2012, one Stoney Creek homeowner discovered methane and barium had entered their water. Another continues to suffer the ill effects of gas flaring from a nearby well, which highlights two other problems: air pollution and government inaction to protect citizens.

Everyone shares the impact

Fracking removes massive amounts of fresh water from lakes, rivers and aquifers, destroying our most valuable renewable resource for a non-renewable resource. Heavily fracked areas in the west are experiencing drought and farmers are losing traditional water sources while industry sucks rivers and lakes dry.

In recent years, over 1300 peer-reviewed studies have documented the environmental and health harms. Heavy truck traffic, noise and flaring, stress and congestion on existing roads, fragmented landscape...How does an industrial zone co-exist with a Fundy Biosphere Reserve and world class eco-tourism destination?



Oil and water wells around Hillsborough.

The economics

BC provides more incentives to industry than it collects in royalties. The Saskatchewan government subsidizes the industry with billions, while reducing budgets for education, libraries and parks. Cleaning up orphaned wells in Alberta and Saskatchewan could cost the taxpayers billions.

Meanwhile, Vermont's clean energy labour force has increased by 29% since 2013, employing over 19,000 workers. Massachusetts has an \$11.4 billion clean energy sector

with 109,000 workers.

We don't have to pay for jobs and economic recovery with the health and well-being of our families and our environment. We don't have to soil where we sleep.

Deborah Carr is a member of Water and Environmental Protection for Albert County (wepac.ca), a community group that educates the public on the impacts of shale gas and oil development and advocates for a clean energy future.

Hillsborough Farmer's Market



Victoria Day to Thanksgiving

Saturdays 9am-2pm

2807 Main St. Hillsborough
market@foodsofthefundyvalley.ca



Reservations
(506) 887-2930
fundyhighlands.com
info@fundyhighlands.com

8714 Route 114
Fundy National Park, NB
Canada E4H 4V3

We look forward to welcoming you!
Au plaisir de vous accueillir!



Fundy Roads in the last millennium: Fundy Flag Girls

Except for the lies, the following story is true. Names have been changed to protect the guilty.

By Jim Liar

"Yeah, well, here's your gear, survey van, crew – and them? Them's your flag girls."

"Flag girls?" I thought. "Never worked with flag girls before. This could be interesting..."

We loaded up our gear and got ready to leave the construction shack. I said exactly nothing. It was a very cold and early Fundy morning, sun just up. We were tired from our long commutes in. Finally, we were ready to put in a first day of the construction season, pay our bills, make our stamps...but before I started the truck, I turned facing everybody in the back and said: "Just one thing. This summer, we are going to listen to the rock station on that radio. Not going to listen to none of your Albert County manure-kicking music! Got that?"

A visible chill rippled through the truck all the way back to the target flag girls, both married and very determined women supporting families, nervously sitting on shifting bundles of survey stakes. Flag girls didn't rate crew seats back in the day.

Took a couple days for the flag girls to figure out they'd been had. By then, we all knew we were in for a long hot summer together, probably tailing out to Christmas, as everybody with any experience at all could see this job was heading for overtime. An important job decision had to be made: "Are we going to listen to his rock station until our fingers freeze to these signs, or is it Payback Time?"

In the dirt and noise that that dominates the chaos that is a road construction site, I jolted up from my field book hearing a thunderous roar. Any unfamiliar noise on such a site draws all eyes, for it means new and sudden danger.

The survey truck is accelerating hammer down through the job toward me, spinning up my freshly graded gravel. Windows are down. Previously docile flag girls are arms out banging

What's your favourite Albert County story? Feel free to send stories, memoirs and articles to info@connectingalbertcounty.org.

on the doors screaming "Whee-Haw" at the top of their lungs. As I leap away to a safe dirt pile, they swerve to fishtail past me at close range, waving that funny Albert County wave where not all fingers are extended. A blast of country music at 9.9 on the Richter Scale, followed by an immense cloak of choking road dust, drowns out and envelops my world.

That's how we started in on my all-time favourite road build, with the best people to work with ever.

Jim Kitts, (AKA 'Jim Liar,' or worse) born James Fullerton, played away the early '50s in the dirt beside the tracks in Hillsborough, living in a place locally referred to as The Beehive. Swept away young to a remote Lake Huron island, his schooling was by mail, later commuting by boat and skidoo to a two-room, primarily Ojibwa school. Hydro was a summer thing. Life was hunting, fishing, carrying water, cutting wood, and ice with the team until the skidoo displaced them. A dark period brought him back to Hillsborough and civilization during Canada's Centennial year, and since then, he has come home to Hillsborough whenever he can, heading toward thirty years this round. Now pseudo-retired, still playing in the dirt... just compulsively rebuilt the Zen Garden... again.



**CROOKED
CREEK**

CONVENIENCE

NB Liquor Agency & Gas
Coffee, Groceries, Gas, Gluten-free food
Produce, Lotto tickets **882-2918**

BACH Charity Golf Tournament

By Bob Rochon

The 4th annual Bennett and Albert County Health Care Foundation (BACH) charity golf tournament was held June 16, 2018 at the Hillsborough Golf Course. Eighty golfers participated in the event which raised an impressive \$10,400.

Participants enjoyed a fantastic day of golf, which included a chance to win a 2018 EZ-GO golf cart on a hole-in-one challenge. The day culminated in a prize banquet where the chairperson of the BACH Foundation, Warren Williams, greeted the participants and thanked them for their participation and provided them an overview of the Foundation's important work. Many prizes were then awarded thanks to the generosity of the tournament's many sponsors. One lucky golfer, Nancy Jonah, recorded a hole-in-one on the difficult par 3, 17th hole. Nancy was awarded the 17th-hole flag as a memento during the awards banquet.

In total, the Foundation's charity golf tournaments have raised more than \$40,000 in support of the Foundation's work, which includes purchasing the furniture and equipment for the satellite office of the Albert County Health and Wellness Centre in Hillsborough, as well as supporting the work of the Albert County Health and Wellness Centre located in Riverside-Albert.

The BACH Foundation continues to promote health and wellness programs in its catchment area. To date, BACH has supported initiatives such as:

~Literacy Express, pre-school literacy program in the community of Hillsborough;

~Imagination Library, a foundational literacy program where books are purchased each month for all rural Albert County children aged from 0-5 years;

~Sistema music program at the Hillsborough Elementary School, which promotes the building of self esteem and confidence of elementary students in grades 1-3, and

~by supporting the excellent work of Connecting Albert County.

The Board of Directors of the Bennett and Albert County Health Care Foundation and the golf tournament organizing committee would like to thank Scotiabank, the tournament's gold sponsor, for a monetary donation of more than \$1,500. As well, there were five \$500 silver level sponsors which included Tidewater Physiotherapy Inc, Albert County Trail Blazers Inc, Atlantic Underground Services, Ed's Welding and Gary Steeves Insurance. There were also many \$150 Hole Sponsors who donated \$150 or the equivalent in prizes to the tournament (see p. 14).



BACH board member Bob Rochon presents Nancy Jonah with the 17th-hole flag.



Golfers enjoying a well-deserved meal and beverages after a fun day of golf

BACH Golf Tournament Sponsors

Gold: Scotiabank

Silver:

Tidewater Physiotherapy Inc.
Albert County Trail Blazers Inc.
Atlantic Underground Services
Ed's Welding
Gary Steeves Insurance

Hole Sponsors:

Albert County Chamber of Commerce
Albert County Funeral Home
Albert County Health and Wellness Centre Staff
Rick & Ashley Bennett
Broadleaf Guest Ranch
Broadview Powersports
Brunswick Limestone
Carnival Farms
Chipoudy Communities Revitalization
Committee
Collins Lobster Shop
Cooperators Insurance
Crooked Creek Convenience
Downey Home Hardware Building Centre
Green Diamond Equipment
Guardian Drugs Riverside-Albert (Albert County
Pharmacy)
Fundy National Park
Hillsborough Elementary School Students
Hillsborough Golf Course

Anyone wishing to learn more about the work of the Bennett and Albert County Health Care Foundation or to make a donation is encouraged to visit the foundation's website at: www.bachfoundation.com

Hillsborough Kiwanis
Investors Group - Claude Gallant
Danny & Nancy Jonah
Allen McWilliams
Moncton Chrysler Dodge
PepsiCo Moncton
Peterbilt Atlantic
RBC Rodney Shirley, PFP
Bob & Kim Rochon
Scotia Wealth Mgmt. - Sean Connors
Scotia Wealth Mgmt. - Terry Richardson
Dr. Josée Daigle-Sippley
Southeastern Mutual Insurance - J. MacDougall
Frank L. Steeves Ltd.
Studio on the Marsh
Harley Tingley
Uni-Select
Village of Alma
Village of Hillsborough
Village of Riverside-Albert
Warren & Joyce Williams



Participants of a summer yoga class meet weekly at the Hillsborough gazebo on Main St.

Want to join us?

To register, contact Mona Arsenault, 874-5551.

Photo by Sharon MacDonald

"Hidden Gem" cont. from page 1

full of stories. This is like...a hidden gem in the heart of Albert County! I've got to tell more people about this place." It's moments like this that I know I love my job.

So, maybe you've been to the museum and it's time for a return visit. Or maybe you never realized there are six acres of land with historic buildings dating back to the 1800s, each with a story ready to be told. Stories of pirates and a Prime Minister, of war heroes and murder so foul. Stories of the People of the Tides, the people who made Albert County.

Come discover the gem in the heart of Albert County. I would be pleased to spin a tale or two.

Our next special event at the Museum is one of the most popular of the season. Mark your calendars and set reminders in your smart phones for Thursday, August 16 at 2:00 pm, when we will host a delightful afternoon Royalty Tea in honour of Her Majesty, Queen Elizabeth II. You must purchase your tickets in advance at the Museum's



Library / Gift Shop. They are \$15 each and only 80 tickets are available, so be sure to get yours early. This wonderful event 'historically' (yes, pun intended) tends to sell out.

The Albert County Museum is located at 3940 Route 114, Hopewell Cape, NB.

The Museum is open 9:30 - 5:30 seven days a week until Labour Day weekend.

Article and photos contributed by Dan Ross, Manager and Curator of the Albert County Museum and RB Bennett Commemorative Centre.

The Albert County Museum cookbook: ***Fiddleheads, Fricot & Frittata: A Hodgepodge of Atlantic Canadian Recipes*** is only \$8 (including tax) for 200+ recipes, as well as stories about the people and foods of Atlantic Canada. Buy 10 copies and get one free! Order at albertcountymuseum.com/cookbook or pick up a copy (or two) at the Albert County Museum in Hopewell Cape.



Your Fundy Adventure Starts Here

Hiking Trail, Full Service Campground, Sunday Brunch

Accommodations, Restaurant, Outdoor Adventures

(506) 882-2349 Hopewell Hill, NB

www.broadleafranch.ca



OMISTA

OMISTA
Credit Union

Complete banking for people who want to bank local while making the place they live even better.

www.OMISTA.com

Hillsborough Public Library: August Schedule

Story Time (Aug. 7th, 14th, 21st) Children up to the age of 7 and their guardians are invited to the library every Tuesday morning from 10:30-11:30am. Activities include stories, crafts, free play, and other fun activities!

STEAM (Aug. 7th, 14th) Join us Tuesday afternoons from 2-3pm for science, technology, engineering, art, and mathematics-based activities!

Outdoor Activities (Aug. 2nd, 9th, 16th) Children and their caregivers are invited to join us at the library Thursday afternoons from 2-3pm to enjoy the outdoors!

Movie Night (Aug. 2nd, 16th) Everyone is invited to join us every second Thursday evening for a Family Friendly movie starting at 6pm.

Board Games (Aug. 9th, 23rd, 31st) All are welcome at the library for board games! Join us the evening of August 9th or 23rd from 6-8pm, or Friday afternoon, August 31st from 1-5pm, for some board game fun!

Arts & Crafts (Aug. 3rd, 10th, 17th) Children of all ages are invited to drop in for crafts every Friday afternoon from 2-3pm.

Coding Bootcamp (August 4th, 11th) Children and youth ages 8 and up are invited to drop by the library Saturday afternoons from 2-5pm to develop coding skills. No prior knowledge is required. All are welcome!

Summer Reading Club Closing Party (August 18th) Children and their caregivers are invited out to the library for games, crafts, and refreshments to celebrate the end of the 2018 Summer Reading Club! Make sure to bring in your logbooks for them to count toward our final count!

Interested in signing up for the Summer Reading Club? There's still time! Stop by the library today or register online at <https://www1.gnb.ca/0003/src=cle/2018/en/form-e.asp>

All activities are **FREE** and **no registration is required**. Activities and age restrictions vary weekly. Check out our weekly schedule on Facebook or contact the library for more information!

Hillsborough Public Library

Hillsborough.PublicLibrary@gnb.ca 2849 Main St, Hillsborough, NB(506)734-3722

Open Tuesday, Wednesday, Friday, & Saturday from 9am-12pm, 1pm-5pm

Thursday 1pm-5pm, 6pm-8pm



COMMUNITY CALENDAR FOR AUGUST 2018

Wed Aug 1

Shepody Food Bank* 1pm - 3pm

Hillsborough Kiwanis Bingo*

5:30pm - 8:30pm

Thu Aug 2

Ten Thousand Villages Sale. Fair-trade crafts, coffee and food. 1pm-7pm. Alma Activity Centre.

Friends of the Hillsborough Arena -

Chase the Ace* 4:30pm - 7:30pm

Country & Gospel Music* 7pm - 9pm

Fri Aug 3

Ten Thousand Villages Sale. Fair-trade crafts, coffee and food. 10am-7pm. Alma Activity Centre.

Chase the Ace - Riverside-Albert*

6pm - 7:30pm

Weekly Card Games - Alma Leisure Centre* 6:30pm

Sat Aug 4

Hillsborough Farmers Market*

Ten Thousand Villages Sale. Fair-trade crafts, coffee and food. 10am-7pm. Alma Activity Centre.

White Hills Pony Club Open Horse Show Albert County Fairgrounds. See page 19 for details.

Sun Aug 5

White Hills Pony Club Open Horse Show. See page 19 for details.

Mon Aug 6

Pickleball* 6:30pm

Wed Aug 8

Shepody Food Bank* 1pm - 3pm

Hillsborough Kiwanis Bingo*

5:30pm - 8:30pm

Thu Aug 9

Friends of the Hillsborough Arena -

Chase the Ace* 4:30pm - 7:30pm

Country & Gospel Music* 7pm - 9pm

Fri Aug 10

Chase the Ace - Riverside-Albert* 6pm - 7:30pm

Weekly Card Games - Alma Leisure Centre* 6:30pm

Sat Aug 11

Hillsborough Farmers Market*

Sun Aug 12

Waterside Cemetery Annual Memorial Service 2-4pm. Alma Activity Centre. The Waterside Community Association is holding its annual Memorial Service for the Waterside Cemetery. All are welcome to attend and enjoy a social time with a lunch following the service.

* See Weekly Events, p19, for details.

ALAINA LOCKHART

YOUR MEMBER OF PARLIAMENT
FOR FUNDY ROYAL

Because of the Canada Child Benefit, more than 14,000 children's lives are being enriched in Fundy Royal. Some are going to summer camp, day care, or maybe their family has been able to get a head start on school clothes and supplies. Since the creation of the CCB, families in Fundy Royal have received more than \$111 million to help create the best future for their children.

Starting on July 20 the CCB has been adjusted to account for the rising cost of living and to make sure it keeps up with the needs of young families.

If you have questions about the Canada Child Benefit or any other Federal Government Program or Service, please don't hesitate to contact me.

☎ (506) 832-4200 🌐 fundyroyal.ca

✉ alaina.lockhart@parl.gc.ca



Calendar continued from last page

Mon Aug 13

Pickleball* 6:30pm

Meet n' Greet - Moranda van Geest, Green Party Candidate for Albert
7-8:30pm. Hillsborough Kiwanis Center. Meet Moranda van Geest, your Green Party Candidate for Albert. The Meet n' Greet will include a brief talk by Moranda and an opportunity to ask questions, as well as music, mingling, refreshments and door prizes. This is your chance to learn more about how Green Party policies can benefit New Brunswick.

Wed Aug 15

Shepody Food Bank* 1pm - 3pm

Hillsborough Kiwanis Bingo* 5:30pm

Thu Aug 16

Friends of the Hillsborough Arena - Chase the Ace* 4:30pm - 7:30pm

Country & Gospel Music* 7 - 9pm

Fri Aug 17

Chase the Ace Riverside-Albert* 6pm
Weekly Card Games - Alma Leisure Centre* 6:30pm

Sat Aug 18

Hillsborough Farmers Market*



...promoting economic and commercial prosperity in Albert County.

Contact us today to find out the full range of benefits & services we have to offer you & your business.

www.albertcountychamber.com

accofc@gmail.com

P.O. Box 3051, Hillsborough
NB, E4H 4W5

Rising Tide Festival. Live music at Fundy National Park. <https://www.pc.gc.ca/en/pn-np/nb/fundy/activ/mareemontante-risingtide>

Sun Aug 19

Rising Tide Festival. See Aug. 18th.

Mon Aug 20

Pickleball* 6:30pm

Wed Aug 22

Mobile ECO Depot Hillsborough - ECO 360. Noon to 8pm. (See box.)

Shepody Food Bank* 1pm - 3pm

Hillsborough Kiwanis Bingo* 5:30pm

Thu Aug 23

Mobile ECO Depot Hillsborough - ECO 360. Noon to 8pm. (See box.)

Friends of the Hillsborough Arena - Chase the Ace* 4:30pm - 7:30pm

Country & Gospel Music* 7- 9pm

Fri Aug 24

Want to spend a night on Grindstone Island? Join Nature Trust New Brunswick on a trip to Grindstone Island on either Aug 24 or Aug 25 for an overnight adventure! \$125 per person. Contact Melanie Shaw for details: melaniershaw@gmail.com.

Chase the Ace - Riverside-Albert* 6pm - 7:30pm

Weekly Card Games - Alma Leisure Centre* 6:30pm

Sat Aug 25

Hillsborough Farmers Market*

Want to spend a night on Grindstone Island? See Aug, 24th.

Mon Aug 27

Pickleball* 6:30pm

Tues Aug 28

Farm Tour at Fundy Farms: Local Harvest. Learn about growing vegetables, herbs and seeds from Angela MacDougall. 10am-1:30pm. \$10 ACORN members; \$20non-members. Lunch included. Register: acornorganic.org/events

EcoDepot

The mobile EcoDepot visits a different community each month. For no fee, residents will be able to visit any Mobile Eco-Depot to dispose of the following (up to ½ tonne truck/utility trailer):

- Appliances
- Electronic waste
- Furniture
- Small household machinery (emptied of gas and oil)
- Construction/renovation waste
- Household hazardous waste
- Car and small truck tires
- Brush/branches and yard waste
- Clear glass, metal
- Cardboard and paper
- Cooking oil

**No car parts, gas tanks, residential oil tanks, regular curbside waste or commercial waste.

See details at www.eco360.ca/

Wed Aug 29

Shepody Food Bank* 1pm - 3pm

Hillsborough Kiwanis Bingo* 5:30pm - 8:30pm

Thu Aug 30

Friends of the Hillsborough Arena - Chase the Ace* 4:30pm - 7:30pm

Country & Gospel Music* 7 - 9pm

Fri Aug 31

Chase the Ace - Riverside-Albert* 6pm - 7:30pm

Weekly Card Games - Alma Leisure Centre* 6:30pm

Sat Sep 1

Hillsborough Farmers Market*

Mon Sep 3

Pickleball* 6:30pm

Wed Sep 5

Shepody Food Bank* 1pm - 3pm

Hillsborough Kiwanis Bingo* 5:30pm

* See p. 19 for details.

WEEKLY EVENTS

Mondays

Free Grocery Trips Door-to-door service for residents from Alma to Hillsborough to Hillsborough Fresh Mart. If interested, contact:875-1190 or teledriveac@gmail.com.

Pickle Ball 6:30pm Hosted by the Riverside-Albert Recreation Centre. Come on out and see what this sport is all about! \$2/night. First night is free!

Wednesdays

Shepody Food Bank 1-3pm. Albert County Health & Wellness Centre. Bring Medicare numbers for every household member.

Hillsborough Kiwanis Bingo Doors open 5:30, games begin 6:30.

Thursdays

Friends of the Hillsborough Arena Chase the Ace 4:30-7:30pm. Hillsborough Golf Course. Raffle tickets 3 for \$5. Draw 7:30pm.

Country & Gospel Music Night 7pm. Hillsborough Kiwanis Center. Canteen, 50/50 & Door prizes. Open mic; join us with your singing voice/instrument. Admission \$7

Fridays

Chase the Ace—Riverside-Albert 6pm at Fundy Curling Club. Effort of CCRC & Fundy Curling Club to raise money for ice plant & lifelong learning centre at Riverside Consolidated School. Questions? Call 882-2573, 882-2052, 882-2626.

Weekly Card Games 6:30 pm. Alma Leisure Centre. Playing Auction 45. All ages welcome. Refreshments are part of the game night.

Saturdays

Hillsborough Farmers Market. 2807 Main St. Hillsborough. 9am-2pm. Packed with farm fresh goodness and old-fashioned hospitality! Fresh baking & produce, hand-made crafts, hot coffee & tea, breakfast, personal care products, meat, maple products, preserves, pottery, jewelry, woodworking, live music & activities for kids. Support our local small businesses! Contact Angela MacDougall by email at market@-foodsofthefundyvalley.ca

Sundays

Broadleaf Ranch Sunday Brunch 10am-2pm from May to October.



Gary Steeves Insurance

*"Old Fashioned Good Service"
Since 1980*

New Brunswick • Nova Scotia • Prince Edward Island • Newfoundland & Labrador

**Home • Auto • Classic Car
Travel Trailer • Motorhome
Motorcycle • Boat • Cottage • Commercial
Hole-In-One Golf • Travel Insurance**

**Toll Free 1-800-595-3403
506-734-3403
11 Simpson St. Hillsborough**

www.garysteevesinsurance.com



White Hills Pony Club Open Horse Show

Aug 4/5th, Albert County Fairgrounds, Riverside-Albert Canteen on site. Show starts at 9am both days; spectators welcome. Local riders and competitors from across NB. Hunter, Jumper, English flat classes including leadline, walk/trots and costume.

Saturday evening is a fun team jumper class where the riders are encouraged to dress up and teams of 3 will compete to see which team is the fastest against the clock with the fewest faults—a fun event for participants and spectators!

For details or entry forms check out 'White Hills Pony Club Open Horse Show' on Facebook or email whitehillspnyclub@gmail.com.

Supporters of Connecting Albert County

Connecting Albert County would like to thank the following supporters.
With their help, we can spread the news of rural Albert County.

Bennett and Albert County Health Care (BACH) Foundation www.bachfoundation.com

Alaina Lockhart, your member of parliament for Fundy Royal fundyroyal.ca

Albert County Pharmacy facebook.com/AlbertCountyPharmacy

Gary Steeves Insurance www.garysteevesinsurance.com

Hopewell Rocks www.thehopewellrocks.ca

Tele-Drive Albert County Inc. Tele-Drive Albert County on Facebook

Albert County Chamber of Commerce www.albertcountychamber.com

Broadleaf Guest Ranch www.broadleafranch.com

Crooked Creek Convenience www.facebook.com/crookedcreekconvenience

East Coast Kids Child Care & Learning Centre www.eastcoastkids.ca

Farmer Brown's Greenhouse www.farmerbrowns.ca

Foods of the Fundy Valley foodsofthefundyvalley.ca

Fundy Highlands Motel and Chalets www.fundyhighlandchalets.com

OMISTA Credit Union www.OMISTA.com

Village of Hillsborough villageofhillsborough.ca

Village of Riverside-Albert www.riverside-albert.ca

Albert County Museum albertcountymuseum.com

Chipoudy Communities Revitalization Committee www.chipoudycrc.org

Forest Dale Home www.forestdalehome.ca

Jeff MacDougall, SouthEastern Mutual Insurance jeff.macdougall@semutual.nb.ca

Village of Alma villageofalma.ca

Moranda van Geest, Green Party– Albert Candidate facebook.com/green.moranda.vangeest

To spread the word about your business or organization's work in rural Albert County, see connectingalbertcounty.org/advertising. We also welcome donations.