

Connecting Albert County

October 2018



Grindstone Island Lighthouse
Image by J. Wallace

Going to Grindstone

By Melanie Shaw

On August 24-26th, I was able to take two groups to Grindstone Island for a night. This has never happened before and it was a huge success.

We left Harvey Dam on Zodiac boats on high tide with Tri-County Ground Search & Rescue. The water was very calm when we started out, but the closer we got to the island, swells and white caps appeared—which made for some wet humans!

After our safety briefing on the island, we did one “guided” tour to the lighthouse which everyone couldn’t wait to see and then everyone was free to explore. The main attraction

aside from the lighthouse and the two buildings was the old truck left parked in the middle of the island.

We found a lot of fish bones and the only garbage I saw was what the birds had brought back to their nests. Seals watched us the whole time. At high tide, sandpipers landed on the beach to rest, and gave us a flying show.

While there, bird data was recorded, garbage cleaned up, and warning signs were installed beside the cliffs and on the two buildings. The trail from Mud Cove to the light-

October 2018 Featuring:

- ~Going to Grindstone p. 1
- ~Pirates in Albert County p. 3
- ~Albert County Ex. P.6
- ~ Flu vaccines p. 7
- ~Community calendar & more!



M. Shaw

Continued on page 3

ConnectingAlbertCounty.org

Connecting Albert County

October 2018. Volume 4. No. 10
ISSN 2369-1174/1182 (digital)

Our Mission: To connect rural Albert County through online and print communication.

Connecting Albert County (CAC)

Board: Lisa Brown, Joseph Gallant, Kate Merlin, Victoria Stroud

**CAC Part-time coordinator/
editor:** Janet Wallace

Contributors: Barb Gebuhr, Lynne Greenblatt, Dawne McLean, Dan Ross, Melanie Shaw, Rebekah Wheaton

To advertise, make a donation, submit articles or letters, email info@connectingalbertcounty.org or mail CAC, 8 Forestdale Rd., Riverside-Albert, NB E4H 3Y7

Distribution sites:

Limited numbers of free copies are available at the following:

Hillsborough: Hillsborough Freshmart, Library/Village Office

Riverside-Albert: Albert County Pharmacy, Crooked Creek Convenience, Forest Dale, Albert County Health & Wellness Centre

Alma: Harbour View Market and Restaurant, Fundy General Store
Copies are also at connectingalbertcounty.org/newsletter

The opinions in our newsletter and website do not necessarily reflect the views and opinions of the individuals who make up Connecting Albert County.

We thank Gary Steeves Insurance for their generous gift of printing our newsletter in full colour.

Next deadline: October 15

Letter to the Editor

The Shepody Food Bank family – clients, volunteers and board of directors – would once again like to extend our deepest gratitude to the management and staff of Hopewell Rocks for their continued generosity and community spirit.

Albert County is blessed with an abundance of natural beauty – woodlands, mountains, valleys, waterfalls and, of course, the rising and falling tides of the Bay of Fundy. One of the iconic landmarks, Hopewell Rocks, attracts hundreds of thousands of visitors every year, from all over the globe.

The management and staff of Hopewell Rocks embody the spirit of corporate citizenship in giving back to their community. Twice a year, in spring and fall, they celebrate Albert County Appreciation Day. On these days, the Rocks opens its doors to the public, waiving the admission fees for visitors in exchange for donations to Shepody Food Bank, in cash or non-perishable food items. These events are a major resource for Shepody Food Bank, which is completely volunteer-run and serves over 80 families in lower Albert County. Over the past year, we have distributed over 28,000 meals to individuals and families in need. We have also contributed healthy food items to meal programs at the Riverside Consolidated School, as well as to lower income seniors.

The outpouring of support from visitors to the Rocks continually humbles us, and this fall was no exception. On September 2, over 1800 visitors enthusiastically gave whatever they could to support our mission. We collected over 500 lbs. of food, and enough cash to refill our coffers. We thank you all, and encourage everyone to come and enjoy this wonder of nature and the hospitality of Hopewell Rocks.

Lynne Greenblatt
Shepody Food Bank
8 Forestdale Rd, PO Box 2155
Riverside-Albert, NB, E4H 3Y7

***Learn more, subscribe or advertise at
www.ConnectingAlbertCounty.org***

We welcome your letters, stories, photos& donations.

Contact us at info@Connectingalbertcounty.org

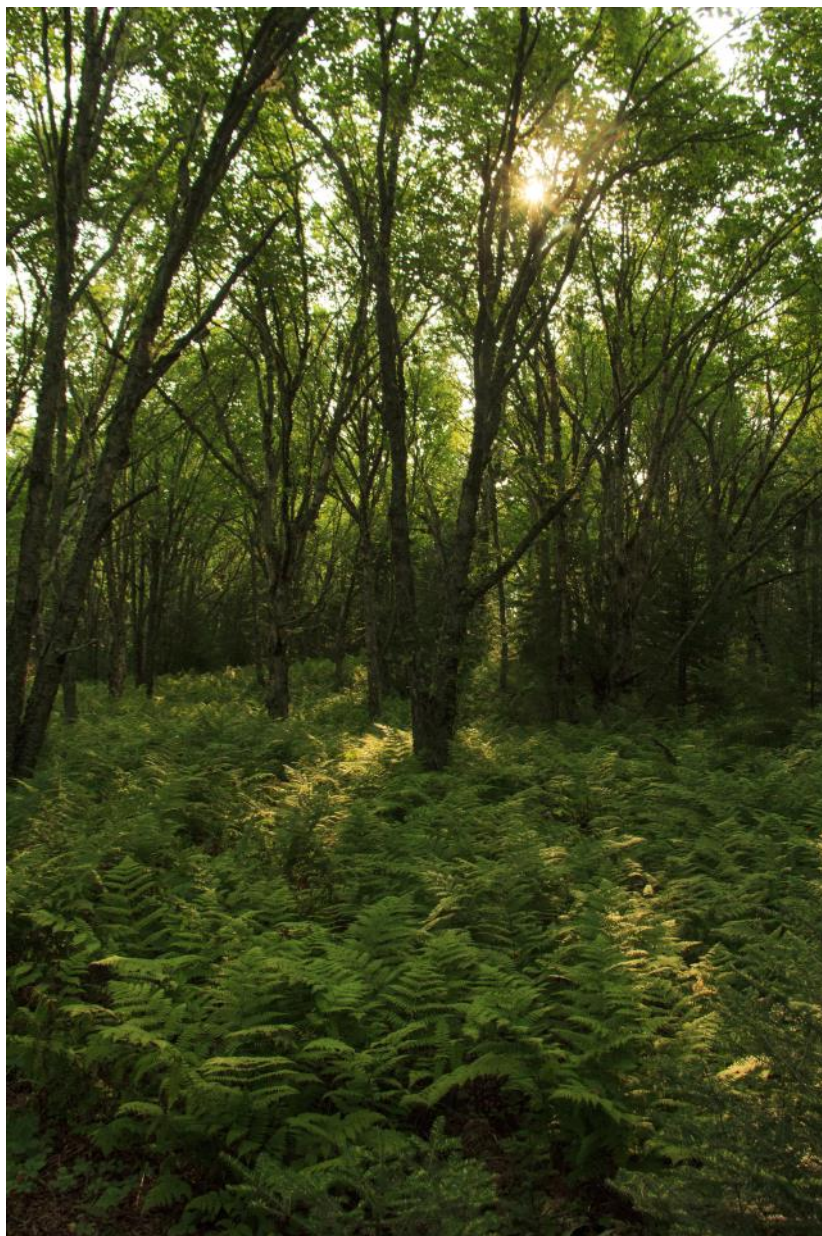
house was cleaned (Nature Trust created the trail in 2016). While we don't encourage visitors to the island, we did want a safe trail for those that do visit.

Everyone had a great time exploring and was respectful of leaving the island better than we arrived: a HUGE thank you to Cedric, Dan, Sara, Larry and André of Tri-County Search & Rescue for taking us to and from the island safely.

Access to the island is only by boat or helicopter. As the currents of the Bay of Fundy are very strong and can be dangerous, only experienced boaters should travel in this area. Visits to the island are only permitted with written permission from the Nature Trust, and then may only be made outside the bird nesting season (May 15-August 15). Contact Nature Trust for more information.

I hope to be able to take a group again in two to three years. For updates, please join our Facebook group "Friends of Grindstone Island."

Melanie Shaw is the Lead Steward of Grindstone Island.



Above: Ferns covered much of the island (*J. Wallace image*).

Left: An old truck in the woods. (*M. Shaw image*).



A majority of Grindstone Island is the preserve of the Anglican Church, Parish of Sackville, which is managed by the Nature Trust through a conservation easement. It covers slightly more than 20 hectares (48 acres) and is located at the entrance to Shepody Bay. Approximately 1.6 hectares (3.8 acres) of land surrounding the local lighthouse (southwest corner of the Island) is owned by the Government of Canada, as well as a second small lot on the island's southeast side. No visiting is allowed between May 15 and August 15 due to the bird breeding season. For details, see Nature Trust of New Brunswick's www.naturetrust.nb.ca/wp/blog/grindstone-island/

Arrr! Here be Pirates!

By Don Ross

Greetings from the Albert County Museum. The 2018 summer season is behind us and my motley crew of dedicated summer employees are back to school. Usually, that's the end of our Museum hours, but I'm pleased to report that thanks to a grant from the New Brunswick Post-Secondary Ed-

ucation, Training and Labour, the Museum was able to hire three "experienced employees" (that's over the age of 55) to extend our season to October 14th. What a great opportunity for our older fall tourists to take tours of the ACM under the umbrella of the glorious fall foliage of our wonderful County.



Artist rendering of Beausoleil from Albert County Museum archives.

In this installment of *Connecting Albert County*, I thought I would spin a story of days gone by. A story of the early settlers of our area that dates back to the year 1698.

It begins with the arrival of Pierre Thibodeau. At the age of 67, Pierre sailed from Port Royal with his close friend Pierre Gaudet and sons Peter, John, Antoine and Michel. The goal was to begin a new settlement which he ultimately founded on the Chipody* River. After a short period of time, Thibodeau met Guillaume Blanchard and his two sons and assisted in building

the settlement of Petitcodiac*. The Village of Hillsborough is now located where the Blanchard settlement was built. Over the next few years the settlers worked with the local Mi'kmaq and learned the skills of trapping animals. It is also said that the two groups joined together for celebrations and feasts.

Now that we have established our first settlements, we'll move forward to the year 1758: three years after the expulsion of the Acadians by the British government.

Joseph Broussard and his four sons were on the run from the British and had taken refuge along the Petitcodiac River. A leader of the Acadian Resistance, his small band of freedom fighters became famous for harassing the British troops in quick "hit and run" skirmishes. His exploits made him a local hero and the locals began to know him as Beausoleil...

Beautiful Sun.

Beausoleil obtained a small schooner and, under the orders of Governor Pierre de Rigaud de Vaudreuil, was named a Privateer by the French Government.

Beausoleil continued to harass the

An advertisement for The Hopewell Rocks. The top half features a scenic view of the Hopewell Rocks on a beach, with large, reddish-brown rock formations rising from the water. The text "The Hopewell Rocks" is written in a large, white, serif font. Below it, the slogan "Walk on the Ocean Floor! Marchez sur le fond marin!" is written in a smaller, italicized font. A diamond-shaped logo with a silhouette of a person is overlaid on the right side of the image. At the bottom, the phone number "1 877 734-3429" and the website "www.thehopewellrocks.ca" are displayed. To the right, there are icons for a question mark, parking, a person, a wheelchair, a stroller, and a baby carriage. The text "Route 114, Hopewell Cape Albert County/Comté d'Albert" is also present.

British forces with very good success. This in turn provoked the British into initiating raids of their own. The first took place in February in Shediac. The second raid took place at the settlement of Shepody in March. However Beausoleil made good his escape.

The British continued their campaign of conquest of the Acadians and their search for the Pirate Beausoleil. On No-

vember 12th, near midnight, the British sent their soldiers to Moncton to find the elusive pirate. They recorded no deaths or prisoners, but all buildings in sight were burned including La Chapelle (now Moncton's Bore Park), Silvabro (Lewisville) and Jagersome (Dieppe).

A short time later, Beausoleil's Schooner was captured. But, once again, he eluded capture. There is no definitive

proof of where he escaped to, but the English missed their pirate prize.

Of interest to the conclusion of this story: **Definition of Privateer:** an armed ship owned and officered by private individuals holding a government commission and authorized for use in war, especially in the capture of enemy merchant shipping.

Definition of Piracy: The act of robbery or criminal violence by ship- or boat-borne attackers upon another ship or coastal area, typically with the goal of stealing cargo and other valuable items or property. Those who engage in acts of piracy are called pirates.

To the Acadian people, Beausoleil was a Privateer and a hero.

To the British, he was a despicable Pirate.

History shows that the army of conquest writes the history of the war.

The Albert County Museum is located at 3940 Rte 114, Hopewell Cape. The Museum is open 9:30-5:30 seven days a week until Oct. 14th.

Dan Ross is the Manager and Curator of the Albert County Museum and RB Bennett Commemorative Centre.

*Petitcodiak and Chipody are historically accurate spellings of Petitcodiac and Shepody

Your Autumn Adventure begins at the Albert County Museum

Take a trip back in time to the 1800's.

The "Hidden Gem of Albert County";

Eight historic buildings, on their original foundations, housing over 20 historical exhibits, located on a 6 acre village in the heart of Hopewell Cape.

Join us for a guided tour of the "Shiretown" and hear stories of Pirates and a Prime Minister, of War Heroes and even a convicted axe murderer!

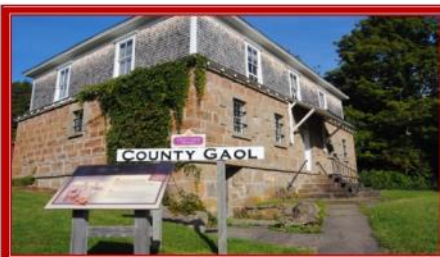
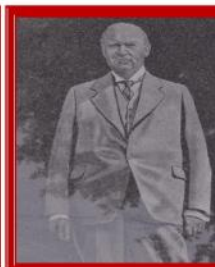
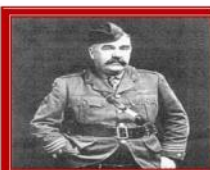
After your tour, relax and enjoy a coffee or tea and a muffin or sweet snack in our library/cafe. (Free with your paid admission)

Open Monday to Sunday from 9:30 AM to 5:30 PM
until October 14th, 2018

Guided Tours at 10:00 AM and 2:00 PM

**Seniors \$8 / Adults \$10
Family \$25**

*The Albert County Museum is located at 3940, Route 114, Hopewell Cape, NB.
(506) 734-2003*



Albert County Exhibition 2018 Queen Pageant

By Dawne McLean

Hannah Morrissey, 16-year-old daughter of Brian and Jeanine Morrissey of Riverside-Albert, was crowned Queen of the 2018 Albert County Exhibition on September 13th, following the Official Opening of the Exhibition which celebrated its 105th anniversary.

First Princess was Josie Steeves of Hillsborough, 14-year-old daughter of Andrea Steeves and Adrian Young.

Second Princess was Kiera Lockhart, 16-year-old daughter of Eric and Stacey Lockhart of Hopewell Hill.

Jade Ranger, 15-year-old daughter of Leonard and Wendy Ranger of Hopewell Hill was chosen Miss Congeniality by her fellow contestants.


The other pageant contestants were Samantha Keiver, Melissa Morrissey, Morgan Steeves and Meaghan Young. The pageant judges were two former ACE Queens, Margaret Ann Williamson (Queen 1964) and Cindy MacCallum (Queen



Participants in 2018 Queen Pageant. Back (L-R): Jade Ranger, Morgan Steeves, Samantha Keiver, Melissa Morrissey. Front: Meaghan Young, Josie Steeves, Hannah Morrissey, Kiera Lockhart.

1983) and gentlemen, Grant Colpitts and Michel Belliveau.

As coordinator of the Queen Pageant, I sincerely thank the community businesses and organizations for their generous donations and gifts provided for the pageant each year. The Queen Pageant, a cherished fair tradition since 1962, brings a youthful spirit and excitement to the exhibition. The pageant is a special day that provides a rewarding opportunity and memorable experiences for the participants, as the girls spend an afternoon together enjoying activities and presentations by guest speakers, practicing their dance routine for the evening ceremony, making new friends, and gaining the valuable experience of being interviewed. Each year the reigning ACE Queen has the opportunity to enter the Miss New Brunswick Pageant as “Miss Albert County.” For the last two years, ACE Queens, Brooklyn Wilkins (2016) and Olivia Lipton (2017) have been wonderful ambassadors as they represented Albert County at the Miss New Brunswick Pageant.



5823 King St., Riverside-Albert
NB E4H 4B4

**Village of
Riverside-Albert**
Fundy Historic Village

506-882-3022
villra@nbnet.nb.ca www.riverside-albert.ca



Your Fundy Adventure Starts Here

Hiking Trail, Full Service Campground, Sunday Brunch

Accommodations, Restaurant, Outdoor Adventures

(506) 882-2349 Hopewell Hill, NB
www.broadleafbranch.ca

Flu shot season

Getting immunized each year with the influenza vaccine (flu shot) is the best way to protect against influenza infection (flu), a serious and sometimes fatal disease.

The flu shot is available at certain pharmacies, the Albert County Health and Wellness Centre, and other medical centres. The vaccine is available for free for the vast majority of New Brunswick residents. Specifically, the flu shot is free of charge for the following :

- People ≥ 65 years of age;
- Healthy children 6 months to 18 years of age;
- All pregnant women
- People with the following chronic health conditions:

- cardiac or pulmonary disorders (including bronchopulmonary dysplasia, cystic fibrosis and asthma);
- diabetes mellitus and other metabolic diseases;
- cancer, immune compromising conditions (due to underlying disease and/or therapy);
- renal disease;
- anemia or hemoglobinopathy;
- neurologic or neurodevelopment conditions;
- morbid obesity (BMI ≥ 40);
- People capable of transmitting influenza to those at high risk including:
 - household contacts (adults and children) of individuals at high risk of influenza-related complications (whether or not

the individual at high risk has been immunized); and

- household contacts of infants;
- and certain others (for the entire list, contact your flu shot provider).

The flu shot will be available in mid- to late October. The precise dates will be announced on the Connecting Albert County calendar and Facebook page once the dates are determined.

The Bennett and Albert County Health Care (BACH) Foundation raises funds to support the services provided by the Albert County Health and Wellness Centre including equipment and staff education.

www.bachfoundation.com

ALBERT
COUNTY
PHARMACY

Guardian

Feeling Better Starts Here

Save Smart, Shop Local.

Bring in your provincial health card and get your flu shot here at no charge!

Call us for vaccine availability

Store Hours:

Mon-Fri 9am-6pm;

Saturdays 9am-5pm;

Pharmacist on Duty:

Mon-Fri 9am-6pm

Don't go viral.
GET YOUR
flu
SHOT HERE

ALBERT COUNTY PHARMACY

5883 King Street, Riverside-Albert, NB, E4H 4B5

Ph: (506) 882-2226 Fax: (506) 882-2101

Chipoudy Communities Revitalization Committee (CCRC) News

The 4th round of Chase the Ace was recently won by Craig Phillips of Lower Coverdale, who took home \$9860 plus the evening ticket draw of \$410. There were 16 cards left.

We have started our new game and are grateful for the continued support of the community. On Friday nights from 6-7:30, you can enjoy a delicious homemade meal by Chef Stephen Land for an extremely reasonable price. It's like having our own "pop-up" restaurant in Riverside Albert. You can play cards, watch TV, curl (in season), or chat with friends – relax and have fun. And for \$5 you have a chance to win an ever-increasing pot of cash! The odds of winning are far greater than Atlantic Lotto can provide. The Curling Cub has benefitted directly, as they were able to replace the Chiller Barrel and complete other necessary repairs.

CCRC contributes to a number of community initiatives: White Hills Pony Club, sponsors a kayak team during Shepody days, sponsors a figure skater, a yearly CRHS bursary, BACH Golf Tournament, Harvey Hall restoration, a pressure washer for the Albert County Exhibi-

tion, a washing machine for the daycare center and Riverside Consolidated School. Future plans include renovating more of the basement of the school to provide community education space. Economic development of lower Albert County is the mission of CCRC.

This fall we are planning to offer a number of courses: Microsoft Excel and Word; a "French Café" where you can practice your French in a conversational, no-pressure way; using Social media to connect with family and friends; Financial Management; and cooking classes. If these interest you, please call 882-2573 or leave a message on our facebook page or website.

Mark your calendars for the popular Christmas Market at the Historic Riverside Consolidated School, 9-4, Saturday December 1, with a storm date of December 8. Breakfast and lunch will be available on site, and vendors of all kinds are looking forward to again presenting their best to you for the holiday season. If you are interested in renting table space, call 882-2573.

Contributed by Barb Gebuhr



East Coast Kids
Child Care & Learning Centre

Safe & fun environments that offer quality care & programs/activities for children ages 2-12 yrs.
Licensed Centres in Hillsborough & Riverside-Albert
childcare@eastcoastkids.ca 506-962-5868

Play
Laugh
Learn



Fundy Highlands
motel & chalets

Reservations
(506) 887-2930
fundyhighlands.com
info@fundyhighlands.com
8714 Route 114
Fundy National Park, NB
Canada E4H 4V3

We look forward to welcoming you!
Au plaisir de vous accueillir!






CROOKED CREEK

CONVENIENCE

NB Liquor Agency & Gas
Coffee, Groceries, Gas, Gluten-free food
Produce, Lotto tickets 882-2918



CREDIT UNION
OMISTA

OMISTA
Credit Union

Complete banking
for people
who want to bank local while making the
place they live even better.
www.OMISTA.com

Hillsborough Public Library: October 2018 Programs

Toddler Time (Tuesdays, 10:30-11:30am). Up to age 4. A fun time of play and socialization.

Story Time (Tuesdays, 1:30-2:30pm). Up to age 5. Children and their guardians are invited to join us for stories, crafts, and more!

Happy Hobbies (Wednesdays, 10-11am). Ages 19 & up. Are you interested in finding a new hobby or just enjoy trying new things? Share in the fun and join us on Wednesdays at the library where we will try a new, interesting hobby every week! Oct. 3rd: calligraphy, Oct. 10: model building. Check back for the following weeks!

Coding Drop-in (Oct. 3rd, 17th, and 31st, 3:30-4:30pm). Ages 5+. Drop in and learn how to code with games, apps, and more!

After-school Chess Club (Oct. 10th and 24th, 3:30-4:30pm). Ages 7+. Drop by the library after school to compete in a friendly chess tournament! All skill levels are welcome!

French Conversation Circle (Oct. 11th and 25th, 3-4pm). Practice French in a no-pressure environment. This is not a class. All ages and ability levels are welcome!

No-Pressure Book Club (Oct. 4th, 6-7pm). All ages welcome. Join us for a No-Pressure book club the first Thursday of every month. Share about what you have read recently, are currently reading, and/or get suggestions from your community about what to read!

Technology Help (Fridays, 10-11:45am). All ages. Drop by the library for help with your old and new technology, including devices and/or programs.

Let's get Crafty! (Oct. 5th and 19th, 3:30-4:30pm). Ages 5+. Show off your creative side with exciting crafts every second week!

STEAM Drop-in (Oct. 12th and 26th, 3:30-4:30pm). Ages 6+. Challenge yourself with activities and experiments in Science, Technology, Engineering, Art, and Mathematics!

Special Programs:

Canadian Library Month Launch (Oct. 2nd, 3:30-5pm). All ages. Celebrate Canadian Library Month and learn more about your local library!

Thanksgiving crafts (Oct. 6th, 2-3pm). All ages welcome. Show off your creative side with some thanksgiving themed crafts!

Library Sessions (Oct. 9th, 16th, 23rd, and 30th, 3:30-4:30pm). All ages welcome. Come out to learn some tips and tricks on how to use your library!

Oct. 9 – Library basics

Oct. 16 – Online catalogue

Oct. 23 – Databases

Oct. 30 – Accessible technology

LEGO night (Oct. 11th, 6-8pm). All ages welcome. Build and create with LEGO!

Adult Craft Night (Oct. 25, 6:30-7:30pm). Ages 19+. A fun evening of DIY creativity.

Halloween Party (Oct. 27th, 2-3pm). All ages welcome. Join us for a fun afternoon of games and crafts. Feel free to dress up!

All activities are **free**. Activities vary weekly. Check out our schedule on Facebook or contact the library for more information!

Hillsborough Public Library

(506)734-3722

Hillsborough.PublicLibrary@gnb.ca

2849 Main St, Hillsborough, NB

Open Tuesday, Wednesday, Friday, & Saturday
from 9am-12pm, 1pm-5pm

Thursday 1pm-5pm, 6pm-8pm



2849 Main St Unit 1 Hillsborough NB E4H 2X7
www.villageofhillsborough.ca

Village of Hillsborough

Tel: (506) 734-3733

Fax: (506) 734-3711

Email:

hillsboroughnb@rogers.com

COMMUNITY CALENDAR FOR OCTOBER 2018

Fri Sep 28

Chase the Ace-Riverside-Albert*6pm

Hillsborough Foundation Story Day

6-8pm. Steeves House Museum, Hillsborough. Group storytelling celebrating Albert County's heritage. All welcome. Refreshments available.

Card Games-Alma*6:30pm

Sat Sep 29

Harvest Market and Corn Boil at the Hillsborough Farmers Market

9am - 2pm. 2807 Main St., Hillsborough. Join us for our Second Annual Harvest Market. Come and check out the wares from our regular and visiting vendors. Bring your cameras to snap some shots of yourselves and your families at our Fall Photo Booth and don't forget the corn boil!

A Step in Time: Swing Dancing

Lesson 2-3:30pm. Steeves House Museum, Hillsborough. This is a beginner swing class. Everyone is welcome, no experience necessary. Get some exercise and learn something new.

Mon Oct 1

Pickleball* 6:30pm



...promoting economic and commercial prosperity in Albert County.

Contact us today to find out the full range of benefits & services we have to offer you & your business.

www.albertcountychamber.com
accofc@gmail.com

P.O. Box 3051, Hillsborough
NB, E4H 4W5

Tue Oct 2

Let's TALK: Depression 7pm - 8pm. Caledonia Regional High School, Hillsborough. 'Let's TALK' is a series of conversational evenings where we can learn more about our mental health and ask the questions that we would love to have answers for. This is an opportunity to get to know our mental health. Remember, not everyone has mental illness but everyone has mental health. Each time we meet (approx. every two months), we will have a different topic to learn about. Come and join us and be part of the conversation.

Wed Oct 3

"North of 55"* 10:00am - 11:30am

Shepody Food Bank* 1pm - 3pm

Hillsborough Kiwanis Bingo* 5:30pm

Thu Oct 4

Friends of the Hillsborough Arena -

Chase the Ace* 4:30pm - 7:30pm

Country & Gospel Music* 7pm

Fri Oct 5

Chase the Ace - Riverside-Albert*
6pm - 7:30pm

Weekly Card Games - Alma* 6:30pm

Mon Oct 8

Pickleball* 6:30pm

Wed Oct 10

Shepody Food Bank* 1pm - 3pm

Hillsborough Kiwanis Bingo* 5:30pm

Thu Oct 11

Friends of the Hillsborough Arena -

Chase the Ace* 4:30pm - 7:30pm

Country & Gospel Music* 7pm

Let's TALK: Depression 7-8pm. Riverside Consolidated School. See Oct 2nd.

Fri Oct 12

Chase the Ace-Riverside-Albert*6pm
Card Games-Alma* 6:30pm

*See Weekly Events on page 11.

EcoDepot

The mobile EcoDepot visits a different community each month. For no fee, residents will be able to visit any Mobile Eco-Depot to dispose of the following (up to ½ tonne truck/utility trailer):

- Appliances
- Electronic waste
- Furniture
- Small household machinery (emptied of gas and oil)
- Construction/renovation waste
- Household hazardous waste
- Car and small truck tires
- Brush/branches and yard waste
- Clear glass, metal
- Cardboard and paper
- Cooking oil

**No car parts, gas tanks, residential oil tanks, regular curbside waste or commercial waste.

See details at www.eco360.ca/

Sat Oct 13

Fleet Launch in Alma 10pm - 12am
Alma Wharf, 8607 Main St. Alma Village hosts a potluck at the Activity Centre at 10pm until midnight on Oct. 13th, then join everyone at the wharf for hot chocolate, coffee and local treats in preparation of the exciting fleet launch of fishing vessels on Oct. 14th at 2am. Enjoy our local fare, music and fireworks to help send our fishermen out on a safe and prosperous fishing season.

Sauerkraut making workshop. 1pm. Riverside-Albert Rec. Centre. Hosted by Foods of the Fundy Valley.

Mon Oct 15

Pickleball* 6:30pm

Wed Oct 17

"North of 55"* 10:00am - 11:30am
Eco360. Noon to 8pm. Alma (above)

Shepody Food Bank* 1pm - 3pm

Hillsborough Kiwanis Bingo*5:30pm

WEEKLY EVENTS

Mondays

Free Grocery Trips Door-to-door service for residents from Alma to Hillsborough to Hillsborough Fresh Mart. If interested, contact:875-1190 or teledriveac@gmail.com.

Pickle Ball 6:30pm Hosted by the Riverside-Albert Recreation Centre. Come on out and see what this sport is all about! \$2/night. First night is free!

Wednesdays

"North of 55"* 10-11:30am. Hillsborough Baptist Church, Family Room. If you are 55+, come along and bring a friend and/or neighbour to enjoy snacks, games, stories and much more every two weeks (Oct 03, Oct 17, Oct 31, Nov 14, and Nov 28).

Shepody Food Bank 1-3pm. Albert County Health & Wellness Centre. Bring Medicare numbers for every household member.

Hillsborough Kiwanis Bingo Doors open 5:30, games begin 6:30.

Thursdays

Friends of the Hillsborough Arena Chase the Ace 4:30-7:30pm. Hillsborough Golf Course. Raffle tickets 3 for \$5. Draw 7:30pm.

Country & Gospel Music Night 7pm. Hillsborough Kiwanis Center. Canteen, 50/50 & Door prizes. Open mic; join us with your singing voice/instrument. Admission \$7

Fridays

Chase the Ace—Riverside-Albert 6pm at Fundy Curling Club. Effort of CCRC & Fundy Curling Club to raise money for ice plant & lifelong learning centre at Riverside Consolidated School. Questions? Call 882-2573, 882-2052, 882-2626.

Weekly Card Games 6:30 pm. Alma Leisure Centre. Playing Auction 45. All ages welcome. Refreshments are part of the game night.

Saturdays

Hillsborough Farmers Market. 2807 Main St. Hillsborough. 9am-2pm until Thanksgiving weekend. Packed with farm fresh goodness and old-fashioned hospitality! Fresh baking & produce, hand-made crafts, hot coffee & tea, breakfast, personal care products, meat, maple products, preserves, pottery, jewelry, woodworking, live music & activities for kids. Support our local small businesses! Contact Angela MacDougall by email at market@foodsofthefundyvalley.ca

Sundays

Broadleaf Ranch Sunday Brunch 10am-2pm from May to October. Broadleaf Ranch Restaurant



Gary Steeves Insurance

*"Old Fashioned Good Service"
Since 1980*

New Brunswick • Nova Scotia • Prince Edward Island • Newfoundland & Labrador

**Home • Auto • Classic Car
Travel Trailer • Motorhome
Motorcycle • Boat • Cottage • Commercial
Hole-In-One Golf • Travel Insurance**

**Toll Free 1-800-595-3403
506-734-3403
11 Simpson St. Hillsborough**

www.garysteevesinsurance.com

Thu Oct 18

Friends of the Hillsborough Arena-Chase the Ace*4:30pm
Eco360. Alma. Noon to 8pm. See box on last page.
Country & Gospel Music Evening* 7pm - 9pm

Fri Oct 19

Chase the Ace - Riverside-Albert* 6pm - 7:30pm
Weekly Card Games - Alma Leisure Centre* 6:30pm

Mon Oct 22

Pickleball* 6:30pm

Wed Oct 24

Shepody Food Bank* 1pm - 3pm
Hillsborough Kiwanis Bingo* 5:30pm - 8:30pm

Thu Oct 25

Friends of the Hillsborough Arena-Chase the Ace*4:30pm
Country & Gospel Music Evening* 7pm - 9pm

Fri Oct 26

Chase the Ace - Riverside-Albert* 6pm - 7:30pm
Weekly Card Games - Alma Leisure Centre* 6:30pm

Mon Oct 29

Pickleball* 6:30pm

Supporters of Connecting Albert County

Connecting Albert County would like to thank the following supporters.
With their help, we can spread the news of rural Albert County.

Bennett and Albert County Health Care (BACH) Foundation www.bachfoundation.com

Alaina Lockhart, MP Fundy Royal fundyroyal.ca

Albert County Pharmacy facebook.com/AlbertCountyPharmacy

Gary Steeves Insurance www.garysteevesinsurance.com

Hopewell Rocks www.thehopewellrocks.ca

Tele-Drive Albert County Inc. Tele-Drive Albert County on Facebook

Albert County Chamber of Commerce www.albertcountychamber.com

Broadleaf Guest Ranch www.broadleafranch.ca

Crooked Creek Convenience www.facebook.com/crookedcreekconvenience

East Coast Kids Child Care & Learning Centre www.eastcoastkids.ca

Farmer Brown's Greenhouse www.farmerbrowns.ca

Foods of the Fundy Valley foodsofthefundyvalley.ca

Fundy Highlands Motel and Chalets www.fundyhighlandchalets.com

OMISTA Credit Union www.OMISTA.com

Village of Hillsborough villageofhillsborough.ca

Village of Riverside-Albert www.riverside-albert.ca

Albert County Museum albertcountymuseum.com

Chipoudy Communities Revitalization Committee (CCRC) www.chipoudycrc.org

Forest Dale Home www.forestdalehome.ca

Jeff MacDougall, SouthEastern Mutual Insurance jeff.macdougall@semutual.nb.ca

Village of Alma villageofalma.ca

Catherine Black, Liberal Part—Albert Candidate www.facebook.com/CatherineBlackAlbert

Moranda van Geest, Green Party—Albert Candidate facebook.com/green.moranda.vangeest

Mike Holland, Progressive Conservative—Albert Candidate www.facebook.com/votemikeholland

To spread the word about your business or organization's work in rural Albert County, see connectingalbertcounty.org/advertising. We also welcome donations.

Bennett and Albert County Health Care (BACH) Foundation

Volunteer with Connecting Albert County

Available positions:

Website poster: responsible for maintaining and update posts on our website using Weebly. Requires 1-2 hours per week, 1-2 hours of training upfront.

Calendar coordinator: ensures calendar events are managed in a timely manner. Requires 2 hours per week on average (note each month may have 3 weeks with only 0.5-1 hr/week and 1 week with 1-3 hrs) with 0.5-1 hour training upfront.

Community liaison: our hands and feet in the community. These people will help us connect with their community and share more stories, news, and events. You can focus on your own village/community or rural Albert County as a whole. Takes 0.5-2 hours per week.

Writers/photographers/proofreaders: invite people to submit stories and photos to Connecting Albert County and to be featured in the publication.

When you join the Connecting Albert County team, you can help us spread the news and

celebrate the wonderful aspects of our community and environment. You can meet new people and learn new skills (we provide training, if necessary). Most or all the work can be done from your home at your own schedule.

For more details, see connectingalbertcounty.org/volunteer.html, call Joseph Gallant at 882-3134 or email Janet Wallace at info@connectingalbertcounty.org.

The Bennett and Albert County Health Care (BACH) Foundation helps create a healthy, vibrant community. The Foundation improves access to health care services in rural Albert County and supports programs that improve community health.



The BACH Foundation supports:

- ◆ Albert County Health and Wellness Centre in Riverside-Albert & Hillsborough satellite clinic
- ◆ Tele-Drive
- ◆ Spin Bikes at Schools
- ◆ Sistema Hillsborough
- ◆ Imagination Library
- ◆ Tele-Health
- ◆ Literacy Express
- ◆ Forest Dale Home Van
- ◆ Connecting Albert County




By donating to the BACH Foundation, you are investing in a healthier community.

(506) 882-3100

bachfoundation.com



impact on health and wellness for the people of Albert County Health and Wellness Centre



BENNETT & ALBERT COUNTY HEALTH CARE FOUNDATION

I would like to contribute a monthly amount of \$ _____ TO BE DEDUCTED ON: 1st or 15th of the month
 I would like to contribute a one-time gift of \$ _____

Name: _____ Telephone: _____

Address: _____

City/Town: _____ Province: _____ Postal Code: _____

E-mail: _____

I have enclosed a cheque made payable to the Bennett and Albert County Health Care Foundation

I prefer to use my: VISA MasterCard

Card Number: _____


Expiry Date (month/year): _____

Signature: _____

Charitable Registration: 869019133 RR0001

Bennett and Albert County Health Care Foundation
 8 Forestdale Road, Riverside-Albert, NB E4H 3Y7
 Tel 506-882-3100 Fax: 506-882-3101

Donate online at www.bachfoundation.com



Improved Template

By

Continued on page 7

Improved Template

By

Continued on page 7