

Connecting Albert County

December 2018



Image by M. Leger

Albert County Trails

By Marc Leger

Trails play to Albert County's strengths. They are perhaps the best way to showcase our scenery, culture, history and biodiversity. This is not a novel idea; many folks already know we have a strong tradition of trails and trail stewardship in Albert County. The Dobson Trail, a 58-km hiking trail connecting Riverview with Fundy National Park, is perhaps our best example. Established in 1959, it's the oldest volunteer-maintained and managed, long-distance trail in Canada. More recently, the UNESCO Fundy Biosphere Reserve created the Amazing Places program to highlight the natural wonders found along our region's established network of trails. This program has inspired locals and visitors alike to explore and connect with nature throughout Albert County (www.fundy-biosphere.ca).

The Amazing Places program has been so successful that four other UNESCO Biosphere Reserves in Canada have adopted it.

With this trail tradition and local knowledge in mind, are there opportunities to be further examined that could result in further trail development and regional connectivity? The feedback and recommendations that came out of the regional recreation study (see page 3) overwhelmingly supported the goal of connecting every community in the southeast by active living trails. The realization of this goal could result in a fully connected trail system that can truly connect Albert County in a very human way. It would mean improved rural recreation infrastructure that can double as tourism destinations and support local businesses and, ideally, create new opportunities.

An American program called Trail Towns aims to maximize the economic potential of trails in the communities they connect. Trail Towns helps to create trail economies in rural townships that are similar to Albert County. In these communities, businesses respond to the influx of trails users by developing accommodations, services and experiences that appeal to hikers and cyclists. In many cases, communities have found a way to re-invent themselves by investing in trail infrastructure and exploiting their potential by offering services and experiences that trails users want. The best examples are the rural communities that are connected by two trails called the C & O Canal Towpath and the Great Alleghany Passage. Econo-

Continued on page 3

Connecting Albert County

December 2018. Vol. 4. No. 12
ISSN 2369-1174/1182 (digital)

Our Mission: To connect rural Albert County through online and print communication.

Connecting Albert County (CAC)

Volunteers: Lisa Brown, Deborah Carr, Kathy Chapman, Joseph Gallant, Kate Merlin, Catherine Rhyno, Victoria Stroud

**CAC Part-time coordinator/
editor:** Janet Wallace

To advertise, make a donation, submit articles or letters, email info@connectingalbertcounty.org or mail CAC, 8 Forestdale Rd., Riverside-Albert, NB E4H 3Y7

Distribution sites:

Limited numbers of free copies are available at the following:

Hillsborough: Hillsborough Freshmart, Library/Village Office

Riverside-Albert: Albert County Pharmacy, Crooked Creek Convenience, Forest Dale, Albert County Health & Wellness Centre

Alma: Harbour View Market and Restaurant, Fundy General Store

Copies are also at connectingalbertcounty.org/newsletter

The opinions in our newsletter and website do not necessarily reflect the views and opinions of the individuals who make up Connecting Albert County.

We thank Gary Steeves Insurance for the generous gift of printing our newsletter in full colour.

Next deadline: December 15

In this issue

Albert County Trails p1

Charles Smith Construction p4

Tracking our Rail History p5

Recipes for Clam Chowder p6

Messages from the Front p7

Albert County Photographers p10

Music Educator of the Year: Sara Liptay p11

Curling Club Update p12

CCRC Programs p13

Community Calendar p14

Recurring Events p16



**Gary Steeves
Insurance**

*"Old Fashioned Good Service"
Since 1980*

New Brunswick • Nova Scotia • Prince Edward island • Newfoundland & Labrador

**Home • Auto • Classic Car
Travel Trailer • Motorhome
Motorcycle • Boat • Cottage • Commercial
Hole-In-One Golf • Travel Insurance**

Toll Free 1-800-595-3403
506-734-3403
11 Simpson St. Hillsborough

www.garysteevesinsurance.com

mies created as a result of those trail developments have generated tens of millions of dollars for their area in the American Mid-Atlantic. We would be wise to look at ways to adapt the successful Trail Town strategy to fit our region and trail system.

An established tourism operator in Albert County, who also offers guided tours abroad, once told me that he longs for the days where our trails can be better established. He told me he guides groups on trails that would score 10 out of 10 in terms of trail quality but score 2 or 3 out of 10 in terms of scenery and cultural experience. He said that Albert County has an abundance of sites that score a 10 in terms of scenery, history and cultural uniqueness and all that's missing is the trail. Trails can always be built and enhanced. We're fortunate to have the things you can't manufacture: the natural, cultural and historical assets. We just have a little more trail work ahead of us.

In the coming months, residents and stakeholders will be



asked to join a conversation to determine a strategy for trail development in rural Albert County. This strategy will aim to identify opportunities for trail development which can improve access to recreation infrastructure for rural residents that may also appeal to tourists visiting our area. These conversations will explore if and what we want to showcase in our region. They will investigate emerging trends and how we can capitalize on them.

We have so much expertise and knowledge already here. We can learn so much from each other. Take the tiny but mighty community of Elgin, for example. Elgin hosts the most popular and challenging mountain bike marathon in Atlantic Canada. Fundy National Park has long worked hand in hand with the Fundy Hiking Trails Association to promote and improve both the Fundy Footpath and Dobson Trail.

Continued on page 17



...promoting economic and commercial prosperity in Albert County.

Contact us today to find out the full range of benefits & services we have to offer you & your business.

www.albertcountychamber.com

accocf@gmail.com

P.O. Box 3051, Hillsborough

NB, E4H 4W5

Southeast New Brunswick Recreation Master Plan

Three years ago, the New Brunswick Department of Tourism Heritage and Culture (THC) tasked the Regional Service Commission with completing a comprehensive assessment of recreation assets in Southeast New Brunswick. This assessment examined the geographic disbursement and connectivity between recreation assets. While traditional recreation assets like rinks, pools, sports fields and gyms were accounted for, this study also looked closely at trails in our region. The study engaged a wide range of stakeholders and the resulting feedback expressed a recognition that trail assets can serve a multi-functional purpose especially in rural communities. While most would agree trails serve as recreation infrastructure, they are also active transportation corridors and, in many cases, tourism assets.

The Success of Charles Smith Construction

By David Jonah

As a child, travelling with my father, I was always aware of Charles Smith, Senior. Somehow, Charles Smith, Sr. was always doing three jobs at the same time.

In later years, I would go find him in one of his lairs in Parkindale to ask for his help as I struggled getting the Salem and Hillsborough Railroad and rail-bed operational. To my then surprise, Charlie Sr. was a well-known and recommended bridge man for his expertise in trestles and bridge structures that had been engineered in an already bygone era.

There were no plans, drawings or blueprints available to guide me or my motley crew of volunteers in the serious business of taking 100+ tons of thundering steel-wheel railcars across the wooden Hiram Trestle, the Weldon bridge and—the

doozy of the time—the giant, long and deep Turtle Creek Trestle span, which in railway lore was one of the largest wooden rail bridge structures south of Grand Falls.

When I went over it in the lead engine, all I could see was sky on all sides. The long, agonizingly slow pull of 30+ railcars (loaded with antique railcars) with three modern diesel engines screaming to cross the giant divide was all done at a slow crawl. This was done slowly so that the vibration of the steel wheels on steel rails did not set off a timber failure far below us and tip us over. It was “Gulp and Go” time.

Turtle Creek Trestle and its miniature version, the Hiram Trestle, were structures of honeycombed timbers bolted together to link two high points of land across a long span. The

trestles allowed the trains to avoid having to travel a much longer distance in a giant gradual curve across the country to get to the other side of a valley or ravine. Hiram Trestle (now gone) was a visual treat with a near 30-degree curve between the two sides, teetering above a small, vehicle pass-through on Dawson Settlement Road.

Charlie Sr. gave me confidence with his knowledge. He immediately lightened my burden and anxiety. He somehow led a team of pogy-starved bo-hunks from Hillsborough and turned them into apprentice rail-bridge engineers.

Later, as a young adult, I really got to know Charlie Sr. I came to understand the vast amount of native engineering and self-taught physics leavened with uncommon, common sense Charlie Sr. had. He has a wonderful family legacy.

Charlie Sr. thought one of his best achievements was the work ethic and “never-say-can't” attitude of his son, Danny, whom he tutored in the art of backyard physics.

The fact that Danny, now the driving force of Charles Smith Construction Ltd., has such a well-branded and executed promotional headquarters, and carefully maintained distinctive equipment would make Charlie Sr. really proud.

Cont. next page
ConnectingAlbertCounty.org 4



Tracking our Rail History

By David Jonah

The Salem and Hillsborough Railroad ran from Salisbury to Harvey. Today, as you go up the road to the Big Stop from Salisbury's Main Street, you cross the main rail line between Moncton and Saint John. The spur line from Hillsborough joined the main line there. Trains stopped overnight at Hillsborough Station where a hotel was available. The end of the line was Harvey Bank across from Riverside-Albert, near the then-active wharfs. Most of the remnants of the line are part of ATV trails today.

My father told me stories from those steam-rail days. The hotel in Hillsborough was once used for a criminal trial, a murder prosecution of a very determined prisoner. On a very hot summer day, the windows were wide open to let air in. As the lunch break was finishing, the blast of the departing south-bound train was heard leaving the station. As the locomotive passed the open windows, its smoke and steam created a momentary distraction as people turned away from the windows to shelter their eyes, noses and mouths.

As the air cleared, the people inside looked up to see the prisoner give a wave as he leaped out of the window and landed on a passing rail-car roof. He crouched down as the train gathered speed and departed the village. A race to Albert Mines station found no sign of the escapee. I cannot recall the end result. Presumably he was recaptured, but the area around the gypsum mines had a long, slow, grade climb and somewhere he parted company with the train or found a less visible hiding place. This is oral history only. My father had more colourful details, but memory fails me.



July 25, 1984. Image of the crew working on the Hiram Trestle. The cover reads "The Hills are Alive! Hillsborough has risen from the ashes of recession to become a bustling, majestic town."

Continued from page 4:

You had to know and see that first backhoe to understand how far and high the company has come. I think of Charlie Sr. on some days when I meet one of the distinctive blue, black and white super dump trucks on a Moncton-area highway far from home. I smile a little smile as I recall that the first one could barely make it out of Stoney Creek and up Scot's Hill.

I took the time to write this because hundreds of others have bought equipment and paint, and have waxed and waned over the years, but Charles Smith Construction Ltd. endures, strives and succeeds on a daily basis. It ain't ever easy. The essence of professionalism is making it all look easy and calm even when the opposite is true. It's a hell of a family business story. To all of you: Bravo!

Turtle Creek Trestle: Travelling south and east in a snaking, crooked line about five kilometres from the eastern edge of Salisbury, the engineers encountered the vast, marshy spread of the Turtle Creek chasm. One hundred years later, the Turtle Creek watershed has become the present-day water source for Moncton. The Turtle Creek Trestle was south and east of the present Turtle Creek hamlet highway crossroads. The location felt remote and in the middle of nowhere, as I recall.

Trestles required a significant investment of time and labour. The massive trestle was considered a marvel of engineering at the time due to its great length and the depth of the chasm. I cannot recall the exact depth of the chasm, but I sensed that it was a few hundred feet deep.

Weldon Creek Trestle: Weldon is a blip on the current Route 114 but was once thriving. The bridge (later metal-sided) had to withstand the strong, tidal-ice action of the creek. I once read a document (later lost in a fire) that recounted finding rare minerals when the bridge anchors were being dug.

Hiram Trestle: The Hiram Trestle, as I recall, was named for a famous rail engineer who was from the area. It was located immediately beyond the Downey saw mill on Dawson Settlement Road. The trestle was about 5-6 stories high and was a feat of 1800's timber-and-post construction with massive bracing at intersecting angles. These were notched and bolted in patterns to prevent and withstand the pounding vibrations arising from the steel wheels of the pumping motion of the steam locomotives. Think of your car on unbalanced tires at 60 mph and you get the idea of the destructive force on man-made supports spanning distant points of land with what looked like a weir of matchsticks.

Bay of Fundy clam chowder

- 1 pint shucked clams
- 3 medium potatoes, peeled, diced
- 1 clove garlic, crushed
- 1 small onion, finely chopped
- Milk or cream to taste
- Salt and pepper, to taste

Steam enough clams to make a pint after shucking. Filter and save broth, keeping clams aside. Add potatoes, garlic and onions to broth. Cover and simmer until potatoes are tender.

In a separate saucepan, heat milk until bubbles form. Add milk to broth mixture. Add salt and pepper.

Hanna Downey

Manhattan clam chowder

"I've served this chowder to various friends and neighbours in the Maritimes. The initial reaction is a sniff and a scoff – 'This isn't chowder: where's the milk and the cream?' – followed by a 'Mmmmmm...good!' It's different, to be sure, but it's packed with flavour, lighter, and arguably healthier than its creamy cousin. Order a bowl of chowder in the Big Apple (that little hamlet south of us), and this is what you get..."

- 3-4 strips bacon (the more, the merrier), finely diced
- 2 Tbsp olive oil
- ½ tsp red pepper flakes
- 1 large yellow onion, chopped
- 1 large or 2 medium carrots, peeled, ¼-inch dice
- 2 stalks celery, including leaves, diced
- 1 leek, white part only, thinly sliced
- 1 medium green bell pepper, seeded, ¼-inch dice
- 4 cloves garlic, minced
- 2-3 sprigs fresh thyme, chopped
- 2 tsp fresh oregano, chopped (or 1 tsp dried)
- 3 bay leaves
- 1 lb Russet/starchy potato, peeled, ½-inch dice
- 1 can (5.5 oz./156 mL) tomato paste
- 1 can (796 mL) diced tomatoes with juice
- 1 qt. fish stock or clam juice
- 2 (10 oz.) cans baby clams in juice (or equivalent amount of chopped fresh clams)
- Salt, freshly ground black pepper, Tabasco and Worcestershire sauce

In a heavy 6-8-quart soup pot, over medium heat, sauté bacon until most the fat has been rendered, and it is golden brown and almost (but not quite) crisp.

Continued on page 13

Messages from the Front, 1918

By Dawne (Wright) McLean

At the Remembrance Ceremony this year, I read a World War I letter that was written 100 years ago on November 11, 1918 by my great uncle, Hugh Wright, who was serving somewhere in France on that day.

Hugh Wright from Shepody, Albert County, enlisted in the 26th Battalion on November 17, 1914 at the age of 19 years. After training in Saint John, the 26th Battalion sailed to England on the ship “Caledonia” in June 1915. After more training in England, the 26th sailed to France and from there to the battlefield. Hugh served in Belgium and France, spending 17 months in the trenches. In February 1917, he transferred from the 26th Battalion to the 4th Siege Battery of the Canadian Artillery and was a gunner for the remainder of the war. His letter written on the day of the Armistice, expresses the joy and relief felt by



all the soldiers in knowing that the war was finally over and that they would be returning home. However, to transport over 260,000 Canadian military from overseas would take months!

Hugh received his discharge on May 10, 1919 on his 24th birthday and returned to the family farm in Shepody. Years later, from 1936-1950, he was the lightkeeper on Grindstone Island.

During the First World War (1914-1918) when the soldiers

had to spend Christmas far from home, separated from their families and friends, Christmas cards were important reminders that there was life outside the trenches and outside of the war.

Besides my great uncle's many treasured WWI letters that have been safely kept for over 100 years, there are also special Christmas cards that he sent from overseas. Hugh Wright sent an embroidered silk “A Very Merry Christmas” card on Nov. 24, 1915 (see pic-



OMISTA

OMISTA
Credit Union

Complete banking for people
who want to bank local while making the
place they live even better.

www.OMISTA.com



2849 Main St Unit 1 Hillsborough NB E4H 2X7
www.villageofhillsborough.ca

Village of Hillsborough

Tel: (506) 734-3733

Fax: (506) 734-3711

Email:

hillsboroughnb@rogers.com

ture). The embroidered flags of Britain, France and Belgium form the colourful bow on the basket of holly leaves. Embroidered silk postcards were very popular during the First World War and were sent by soldiers to convey affectionate messages or special occasion tidings, as well as patriotic sentiments. They were most commonly made in France and were sold in nearly every shop. The back of the card had space for a message and address. The cards could be stamped and mailed, but usually the soldiers wrote a message and mailed them in envelopes.

During World War I, the battalions of the Canadian Expeditionary Force had their own Regimental Christmas cards. They were professionally printed cards which the soldiers would order to send their good wishes to family and friends. Some of



the cards were quite elaborate with embossed badges and designs.

Cont. next page.

ALAINA LOCKHART

YOUR MEMBER OF PARLIAMENT
FOR FUNDY ROYAL

Happy Holidays Fundy Royal!

As we celebrate the holidays with friends and family, I hope that you find time to help those most vulnerable in our communities. We can make a difference in a number of ways, such as:

- Volunteering at a food bank
- Donating lightly used clothing and toys to those in need
- Helping a local charity
- Checking in with someone who might be alone this holiday season

From my family to yours, Merry Christmas and Happy New Year!

(506) 832-4200 fundyroyal.ca
alaina.lockhart@parl.gc.ca



France

Nov 11th 1918

My Dear Father

Just a few lines today to let you know that we are both well and that the war is at last over, so you will not need to worry anymore.

The armistice was signed early this morning and everyone thinks it will last for good. The hostilities ceased at 11 o'clock this am. Father you have no idea how happy I am and I think I have reason to be. I can hardly realize that it is true, but it is and just think that we will be home in a few months.

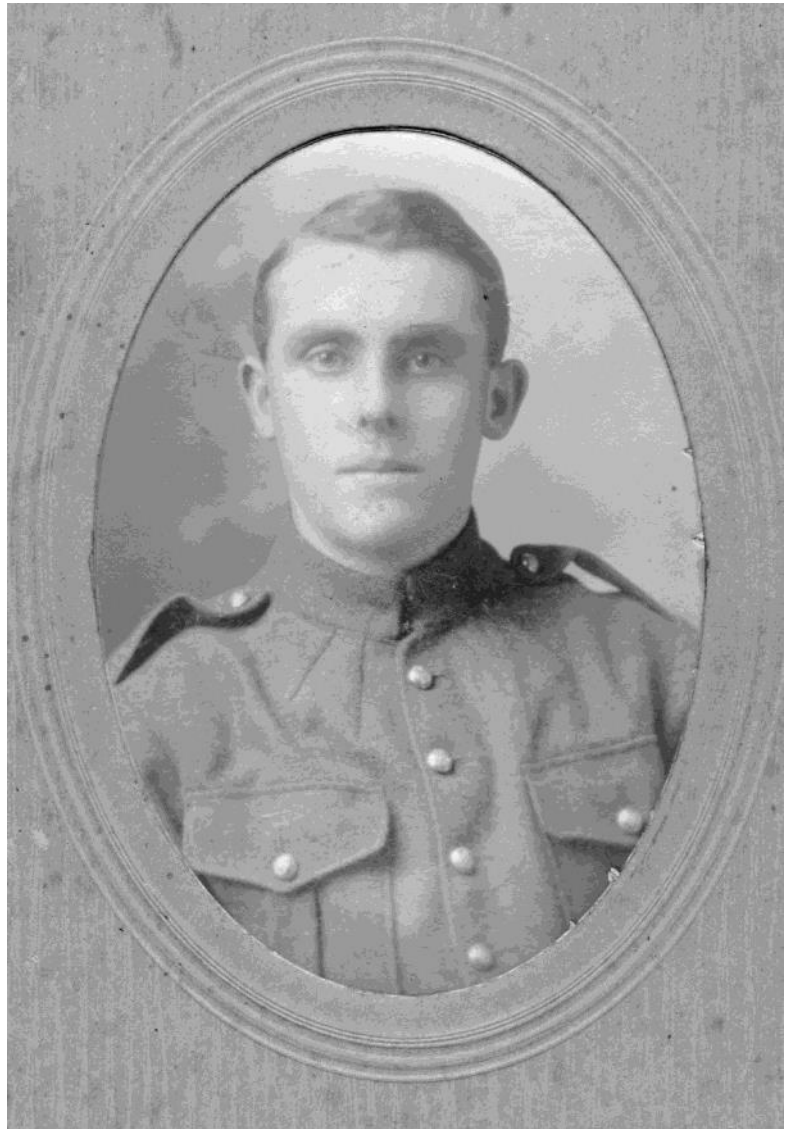
Well, Father I can't write much today. I received a box from home a few days ago with some maple syrup and it sure was good.

Well, will close with Love to all.

Hugh

Hugh Carlyle Wright (pictured at left) was born May 10, 1895 and died June 18, 1958. He is buried in Hopewell Cemetery.

Images and article contributed by Dawne (Wright) McLean.



Yes, I want to help

have a positive impact on health and wellness for the people served by the Albert County Health and Wellness Centre



BENNETT & ALBERT COUNTY HEALTH CARE FOUNDATION

I would like to contribute a monthly amount of \$ _____ TO BE DEDUCTED ON: 1st or 15th of the month

I would like to contribute a one-time gift of \$ _____

Name: _____ Telephone: _____

Address: _____

City/Town: _____ Province: _____ Postal Code: _____

E-mail: _____

I have enclosed a cheque made payable to the Bennett and Albert County Health Care Foundation

I prefer to use my: VISA MasterCard

Card Number: _____

Expiry Date (month/year): _____

Signature: _____

Charitable Registration: 869019133 RR0001

Bennett and Albert County Health Care Foundation
8 Forestdale Road, Riverside-Albert, NB E4H 3Y7
Tel 506-882-3100 Fax: 506-882-3101

Donate online at www.bachfoundation.com



Recognition for Albert County Photographers

Kevin Snair of Creative Imagery (creativeimagery.ca) from the Hopewell area has put his stamp on Canadian postage. Kevin's photo of the Hopewell Rocks at night (left) has been featured on Canadian stamps.

Tracy Munson, a professional photographer from Harvey, NB, won the title of Atlantic Region's Photographic Artist of the Year at the Professional Photographers of Canada Atlantic Region's 2018 competition. 'Enchanted' (below) and 'Flight of the Harrier' won Best in Class Awards (Pictorial/Floral and Fine Art classes, respectively). 'Enchanted' won the Award for Best General Print; it and 'Flight of the Harrier' were also



© 2018

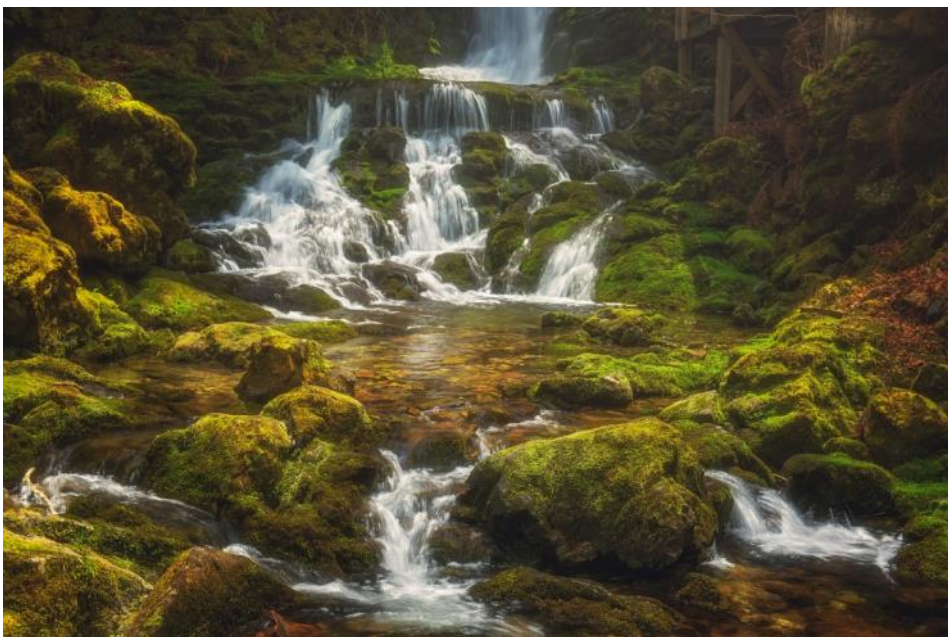
CANADA



chosen for Judge's Choice Awards.

In her own words, Tracy Munson is a rainbow-haired, wine-drinking, nature-loving,

bunny-hugging, award-winning Canadian nature and pet photographer. While living in Toronto, Tracy took every opportunity to escape the city and her rewarding but stressful job in one of the country's largest animal shelters. For many years, she travelled Canada in a tiny car with a large man, a tent, and two chihuahuas. After seeing it all, Atlantic Canada kept drawing her back and in 2018 she escaped city life for good, relocating to beautiful Albert County, NB, to pursue photography full-time.



2018 Music NB Educator of the Year: Sara Liptay

Sistema NB Press Release Oct 30, 2018

Congratulations to Sara Liptay, Sistema NB Teaching Artist and Director of the Hillsborough Sistema Centre! Sara was presented with Music NB's Educator of the Year Award for her work to empower children through music. She shares the award with Eva George of the Charlotte Street Art Centre in Fredericton. The awards were handed out in October at Music NB's gala event in Caraquet.

Sara was Sistema NB's first teaching artist. She taught 50 students in a room at Beaverbrook School in Moncton. A community builder, she has helped to grow the program, which is now in 10 centres across the province.

"The past ten years working with Sistema NB have been exciting and life-changing, not only for me but for the students who pass through the Sistema program," she said. "It is especially rewarding watching our students become not only great musicians, but great citizens of this province, who seek out opportunities to give back."

See www.connectingalbertcounty.org/culture--heritage/sistema-a-noteworthy-program



**ALBERT
COUNTY
PHARMACY**

Guardian

Feeling Better Starts Here

Save Smart, Shop Local.

**Ignoring high blood pressure could
break your heart!**
Our Free Blood Pressure Clinic will be
starting up again soon.
Check our Facebook page for details.

Store Hours:

Mon-Fri 9am-6pm; Saturdays 9am-5pm;

Pharmacist on Duty:

Mon-Fri 9am-6pm

Don't go viral.

**GET YOUR
flu
SHOT HERE**

**Bring your provincial health card
and get your flu shot here at no
charge!**

ALBERT COUNTY PHARMACY
5883 King Street, Riverside-Albert, NB, E4H 4B5
Ph: (506) 882-2226 Fax: (506) 882-2101

Fundy Curling Club News

By Alan Demaline

With the first snows of the season on the ground in Albert County, it surely won't be long until the curling shoes are shined, brooms are at the ready, and the ice is painted and primed to go at the Fundy Curling Club. Our new condensing unit is set to be installed the first week of December with ice-making commencing shortly after that. Our crack team of volunteer ice-makers are on standby to Hurry Hard and get the ice prepared to curl on as soon as the new equipment is installed!

November was a busy month at the club with the staff from Cape Enrage holding their year-end party at the club and the Riverside-Albert Volunteer Fire Department hosting their annual event, as well as Chase the Ace every Friday from 6:00-7:30pm. The jackpot has grown to over \$3,000 so be sure to drop in for your chance to win some extra Christmas cash!

Speaking of Christmas, a membership to the Fundy Curling Club makes a perfect gift for yourself or for those on your list who would like to learn the sport of curling or get back into the game. Offering a fun and relaxed atmosphere, affordable membership rates and the opportunity to curl 1,2 or 3 times per week for the same great price, the Fundy Curling Club is the place to be this winter! Membership rates, dates and other



details will be posted at the club on 16 Mill Street, Riverside-Albert, on www.facebook.com/FundyCurlingClub, and on flyers throughout the community by December 1st. Regular league play is scheduled to begin the first week of January.

We look forward to seeing returning members at the club this year and welcoming new members as our club continues to grow. Thanks for all your support and see you on the ice!

Alan Demaline for the Fundy Curling Club.

CROOKED CREEK
CONVENIENCE
NB Liquor Agency & Gas
Coffee, Groceries, Gas, Gluten-free food
Produce, Lotto tickets **882-2918**

East Coast Kids
Child Care & Learning Centre
Play
Laugh
Learn
Safe & fun environments that offer quality care & programs/activities for children ages 2-12 yrs.
Licensed Centres in Hillsborough & Riverside-Albert
childcare@eastcoastkids.ca 506-962-5868

5823 King St., Riverside-Albert
NB E4H 4B4
Village of
Riverside-Albert
Fundy Historic Village
506-882-3022
villra@nbnet.nb.ca www.riverside-albert.ca

Chipoudy Communities Revitalization Committee (CCRC) presents Cooking and Communicating, Laughing & Licking the Spoon!

Christmas Cookie Exchange

Dec. 13, 12:30-4:00pm

Would you love to have a container of special cookies to offer friends and family over the holidays but hate the thought of mixing, baking and cleaning up? Join us for an afternoon of baking and take home four kinds of Christmas cookies. All containers and ingredients will be supplied. Absolutely free! Fun, fellowship and delicious cookies—how could you say no? **Pre-registration is required**; call 882-2573 or 875-9142 to pre-register as space is limited.

Start with a Chicken

January 17, 12:30-4:00pm

Do you sometimes hate the idea of cooking a meal for one? Do you wonder what to do with leftovers? Come get together and cook delicious dishes – from a whole chicken to a pot of soup. Working together, we will each take home containers of meals for the fridge or freezer. All containers and ingredients will be supplied. Absolutely free! Fun, fellowship and delicious meals—how could you say no? **Pre-registration required**; call 882-2573/875-9142 as space is limited.

How About Hamburger?

February 10, 12:30-4:00pm.

So, after the great chicken dishes we made together in January, let's do something with a package of hamburger that has you saying Yum! instead of Yawn.... Let's work together so we can each take home meals in containers ready for the fridge or

freezer. All containers and ingredients will be supplied. Absolutely free! Fun, fellowship and delicious meals – how could you say no? **Pre-registration is required**. Call 882-2573 or 875-9142 ; space is limited.

French Language Café

Wednesdays 6:30-7:30pm: Jan. 16-Feb. 20.

Looking for a way to practice your French language skills in a relaxed informal setting? If you already have a French as a second language background, join Chantal, Mathieu and Barb. **Pre-registration is required**; call 882-2573 or 875-8172. Absolutely free! There will be coffee, tea and sweets provided, too!

Microsoft Word and Excel

Mondays 6:30-8:00pm: January 7-February 11

This course is designed for those who have some knowledge of Excel and Word and want to expand on that base. There will be three evenings devoted to Excel and three evenings to Word. It is best if you can bring your own laptop; if this is not possible, you can use a computer in the school's lab. Offered by Bob and Lynne Greenblatt. **Pre-registration is required**; call 882-2573 or 875-8172. Free!

All events are free and held at Riverside Consolidated School. Men and women of all ages are welcome to attend!

Chowder recipe continued from page 6

Add oil, garlic and red pepper flakes. Sauté 1-2 minutes until the garlic is soft but not brown. Add the onions, leeks, celery, carrots and green peppers and herbs. Sauté until vegetables are soft, 10-15 minutes.

Move the vegetables to the edge of the pot; in the center, add tomato paste. Stir the paste 1-2 minutes to caramelize. Add the potatoes, tomatoes and stock. Mix well. Bring to a gentle boil over high heat, then reduce heat to simmer and cook until the potatoes are fork-tender, ~20-30 minutes.

Add the clams with their juice. Season to taste. Bring back to a simmer for another few minutes. Serve and enjoy! Makes ~4 quarts, 8-10 servings.

Lynne Greenblatt

Excerpt from *Fiddleheads, Fricot & Frittata*. The Albert County Museum cookbook: ***Fiddleheads, Fricot & Frittata: A Hodgepodge of Atlantic Canadian Recipes*** is only \$8 (including tax) for 200+ recipes, as well as stories about the people and foods of Atlantic Canada. Buy 10 copies and get one free! Order at albertcountymuseum.com/cookbook or pick up a copy (or two) at the Albert County Museum in Hopewell Cape.

COMMUNITY CALENDAR FOR DECEMBER 2018

Saturday December 1

St. Mary's A.C.W. Christmas Bazaar
9:00am-1:00pm, St. Mary's Anglican Church, Hillsborough
Crafts, baking, books and more!

CCRC Annual Christmas Market
9:00am - 4:00pm

Riverside Consolidated School
48 tables of a diverse group of vendors bringing you homemade food and crafts, Epicure, Scentsy, Young Living, Pink Zebra... All kinds of gift ideas: a one-stop shopping experience. Many of your favourite vendors are back, as well as some exciting new ones!

Christmas in the Country
10:00am - 5:00pm

Riverview to Alma
It's the Albert County event of the season! The perfect weekend to spend with friends and family touring the area seeking one-of-a-kind gifts for loved ones and meeting the people that made them, Christmas in the Country is about community and supporting our local shops and producers, and the amazing artists and crafters we have in Albert County. There will be lunch and beverage stops along the way, as well as sweet treats and samples. Fill your car with friends and family and set out on the tour! Maps will be available at Briggs Maps in Riverview along with stops. Watch our Christmas in the Country Facebook page for details.

An Old Fashioned Christmas
10:00am – 5:00pm

Hillsborough Farmers Market
Last chance to visit your favourite market for 2018! Full of festive spirit, 30+ vendors will pack the market for this special weekend. Foods of the Fundy Valley will be offering their famous soup bar, special music by Fundy Ceilidh and even live Christmas Arrangements from Miss Fancy Farmer! #4 on the Christmas in the Country

map is a must-stop location! Updates on the Hillsborough Farmers Market Facebook and Instagram pages.

Christmas at the Ranch
10:00am – 5:00pm

Broadleaf Ranch
Make a fun holiday craft! Paint a Snowman Rock with a local artist. Fun for everyone and absolutely free! Bring a donation for the Shepody Food Bank and take a Selfie with Santa with your own camera! Stop for a nice lunch, chop down your own Christmas Tree (\$10), shop for fun gifts and pre-order your Christmas baking. A family-friendly way to spend the day, get some shopping done and support a local business. Call 882-2349 or visit Broadleaf's [facebook page](#) for updates!

Money Matters Workshop
2:00- 4:00pm Registration Required
Hillsborough Public Library
This workshop will give you basic and practical information about spending, borrowing, and saving. Contact the library (734-3722) for information.

Sunday December 2

Christmas in the Country
11:00am – 4:00pm

See December 1st event description but note different times.

An Old Fashioned Christmas
11:00am – 4:00pm

See December 1st event description but note different times.

Christmas at the Ranch
11:00am – 4:00pm

See December 1st event description but note different times.

Monday December 3

***Pickleball 6:30pm – 8:30pm**

Tuesday December 4

***Toddler Time 10:30am – 11:30am**

***Story Time 1:30pm – 2:30pm**

***Build With Us 2:00pm – 4:30pm**

* See Recurring Events

Wednesday December 5

Adult Hobby Program – Calligraphy
10:00am – 11:00am

Hillsborough Public Library
Ages 19 and up. Preparing holiday cards? Try out calligraphy to add some flair to your cards this year!

***Toddler Time 10:30am – 11:30am**

***Shepody Food Bank 1:00 – 3:00pm**

***Hillsborough Kiwanis Bingo 5:30pm**

Thursday December 6

***Story Time 2:00pm – 3:00pm**

***French Conversation Circle 3-4pm**

***Friends of the Hillsborough Arena - Chase the Ace 4:30pm – 7:30pm**

Adult Crafts: Silhouette Painting
6:30pm – 7:30pm

Hillsborough Public Library
Ages 19 & up. Join us for a fun evening creating silhouette paintings!

***Country & Gospel Music 7-9pm**

Friday December 7

***Technology Assistance 10am-noon**

***STEAM Drop-in 3:30pm – 4:30pm**

***Chase the Ace-Riverside-Albert 6pm**

***Alma - Weekly Card Games 6:30pm**

Monday December 10

***Pickleball 6:30pm – 8:30pm**

Tuesday December 11

***Toddler Time 10:30am – 11:30am**

***Story Time 1:30pm – 2:30pm**

***Build With Us 2:00pm – 4:30pm**

After-school Chess
3:30pm – 4:30pm

Hillsborough Public Library
Ages 7 and up. Drop by after school to compete in a friendly chess tournament! All skill levels are welcome!

Let's TALK: Anxiety
7:00pm – 8:00pm

Riverside Consolidated School
'Let's TALK' is a series of conversational evenings where we can learn

more about our mental health and ask the questions that we would love to have answers for. This is an opportunity to get to know our mental health. Remember, not everyone has mental illness but everyone has mental health. Each time we meet (~every 2 months), we will have a different topic to learn about. Come and join us and be part of the conversation.

Wednesday December 12

***Adult Hobby Program 10–11:00am**

***Toddler Time 10:30am – 11:30am**

***Shepody Food Bank 1pm – 3:00pm**

***Hillsborough Kiwanis Bingo 5:30pm**

Thursday December 13

Christmas Cookie Cooperative Creations 12:30-4pm

Pre-registration is required, please call 882-2573 or 875-8172.

Riverside Consolidated School
Proudly sponsored by CCRC. Come to the school cafeteria (around the back) and help to make four different kinds of Christmas cookies. All ingredients and storage containers will be provided. This workshop is FREE, but space is limited. Enjoy an afternoon of fun, conversation and flour! Walk out with a container of delicious treats to offer your guests during the holiday season. Bring a friend and start your Christmas season off with a fun afternoon!

***Story Time 2:00pm – 3:00pm**

***Friends of the Hillsborough Arena - Chase the Ace 4:30pm – 7:30pm**

Parent/Child Craft Night – Ornaments 6:30pm – 7:30pm

Hillsborough Public Library

All ages. Invite your parent or child, and join us for a fun evening of DIY ornaments!

Sistema Hillsborough Festive Concert 6:30pm – 7:30pm

Hillsborough Elementary School
The Sistema Hillsborough Violin Classes are looking forward to playing for you in their Festive Concert. Admission is free and all are welcome.

***Country & Gospel Music Evening 7:00pm – 9:00pm**

Friday December 14

***Technology Assistance 10:00am – 12:00pm**

Arts & Crafts

3:30pm – 4:30pm

Hillsborough Public Library

Ages 5 and up. Show off your creative side with a fun craft.

***Chase the Ace-Riverside-Albert 6pm**

***Alma - Weekly Card Games 6:30pm**

Saturday December 15

Family Board Game Afternoon 2:00pm – 5:00pm

Hillsborough Public Library

All ages. Unplug for the afternoon and invite your friends and family for some board game fun!

Monday December 17

***Pickleball 6:30pm – 8:30pm**

Tuesday December 18

***Toddler Time 10:30am – 11:30am**

***Story Time 1:30pm – 2:30pm**

***Build With Us 2:00pm – 4:30pm**

Wednesday December 19

***Adult Hobby Program 10-11:00am**

***Toddler Time 10:30am – 11:30am**

***Shepody Food Bank 1pm – 3pm**

***Hillsborough Kiwanis Bingo 5:30pm**

Thursday December 20

***French Conversation Circle 3-4pm**

*** Friends of the Hillsborough Arena - Chase the Ace 4:30pm – 7:30pm**

PJ Story Time

6:30pm – 7:30pm

Hillsborough Public Library

All ages welcome. PJ Story Time with a special holiday guest. Refreshments will be provided.

***Country & Gospel Music 7-9pm**

Friday December 21

***Technology Assistance 10am – noon**

***STEAM Drop-in 3:30pm – 4:30pm**

***Chase the Ace-Riverside-Albert 6pm**

***Alma - Weekly Card Games 6:30**

Wednesday December 26

***Hillsborough Kiwanis Bingo 5:30pm**

Thursday December 27

***Story Time 2:00pm – 3:00pm**

***Friends of the Hillsborough Arena - Chase the Ace 4:30pm – 7:30pm**

***Country & Gospel Music 7-9:00pm**

Friday December 28

***Technology Assistance 10am–noon**

***Arts & Crafts 3:30pm – 4:30pm**

***Chase the Ace-Riverside-Albert 6pm**

***Alma - Weekly Card Games 6:30pm**

Wednesday January 2

***Shepody Food Bank 1pm – 3:00pm**

***Hillsborough Kiwanis Bingo 5:30pm**

Thursday January 3

***Friends of the Hillsborough Arena - Chase the Ace 4:30pm – 7:30pm**

***Country & Gospel Music 7-9pm**

Friday January 4

***Chase the Ace-Riverside-Albert 6pm**

***Alma - Weekly Card Games 6:30pm**

SAVE THE DATE in 2019!

Pre-registration is required. See details on page 13

January 7, 14, 21, 28, February 4, 11
Microsoft Word and Excel (6-week course)

Wednesday January 16

French Language Café (6-week session) 6:30pm – 7:30pm
January 16, 23, 30, February 6, 13, 20

Thursday January 17

Cooking for One - Let's start with a chicken! 12:30pm – 4:00pm

Sunday February 10

Cooking for One - How about Hamburger?

Find addresses on page 17

RECURRING EVENTS IN DECEMBER 2018

Pickleball

6:30pm – 8:30pm every Monday
Riverside-Albert Recreation Centre
Come on out and see what this sport for all ages is about! \$2/night. First night is free!

Toddler Time

10:30am – 11:30am Dec. 4, 11, 18
10:00am – 11:30am Dec. 5, 12, 19
Hillsborough Public Library
Up to ages 4. Children, and their guardians, are invited to join us for a fun time of play and socialization.

Story Time

1:30pm – 2:30pm Dec. 4, 11, 18
2:00pm – 3:00pm Dec. 6, 13, 27
Hillsborough Public Library
Up to ages 5. Children, and their guardians, are invited to join us at the library for stories, crafts, and more!

Build With Us

2:00pm – 4:30pm Dec. 4, 11, 18
Hillsborough Public Library
Ages 5 & up. Drop by Tuesday and try out one of our many different building materials to make your best creation! Choose from Mega Blocks, Duplo, Lego, K'nex, Tinker Toys, and Straws & Connectors.

Shepody Food Bank

1:00pm – 3:00pm Wednesdays, Dec. 5, 12, 19, January 2
Albert County Health and Wellness Centre. The Shepody Food Bank (www.connectingalbertcounty.org/communitygroups) is open every Wednesday. Clients must bring Medicare #'s for every member of their household. Please note that the food bank is closed on days that schools are closed due to weather.

Hillsborough Kiwanis Bingo

5:30pm – 8:30pm Wednesdays
Hillsborough Kiwanis Club
Doors open at 5:30pm, games begin at 6:30pm.

French Conversation Circle

3:00pm – 4:00pm Dec. 6, 20
Hillsborough Public Library
All ages. Join us in practicing French in a no-pressure environment. All ability levels are welcome! Please note that this is not a class.

Friends of the Hillsborough Arena - Chase the Ace

4:30pm – 7:30pm Every Thursday
Hillsborough Golf Course
Raffle tickets 3 for \$5. Draw 7:30pm. You don't need to be present to win but you need to leave 2 valid phone numbers where you can be reached. You can also buy tickets outside of the restaurant during the week or from committee members (Bev White, Chad and Katrina McLean, Jason Holmden, Jason Pugh, Tracey and Peter Bryant, David Simpson, Josh and Natasha Collier). Proceeds towards upgrades and improvements to the Hillsborough Arena. Lottery license 105 710456 003.

Country & Gospel Music Evening

7:00pm – 9:00pm Every Thursday
Hillsborough Kiwanis Club
Featuring the Rocky Cape Band with Jerry Richard, Darrell MacAulay, Willis McKinley, Charles O'Hara, Hazel Bulman, Tom Gould, David Smith, Ken Eagles & guests. This is an open mic, so join us with your singing voice and/or instrument. Admission \$7.

Find addresses on page 17

STEAM Drop-in

3:30pm – 4:30pm Dec. 7, 21
Hillsborough Public Library
Ages 7 and up. Challenge yourself with activities and experiments in Science, Technology, Engineering, Art, and Mathematics! Activities vary weekly. Call the library at 734-3722 for information!

Chase the Ace - Riverside-Albert

6:00pm – 7:30pm Every Friday
Fundy Curling Club
This is a joint effort of CCRC and the Fundy Curling Club to raise money for the ailing ice plant and a lifelong learning center at Riverside Consolidated School. Please join us! 3 tickets for \$5 for a chance to have your number drawn, then an opportunity to draw the ace of spades! Each week the 50/50 winner gets 20% of the night's donations while 30% goes to the ace pot. If the ace is not drawn, the 30% carries over from week to week. How nice to get together with friends, and maybe play a few hands of cards while you wait for the number to be drawn. And you will be supporting 2 excellent community causes! Call if you have questions, 882-2573, 882-2052, 882-2626.

Alma - Weekly Card Games

6:30pm – 8:30pm Every Friday
Alma Leisure Centre
All ages welcome. Playing Auction 45. Refreshments are part of the game night.

Adult Hobby Program

10:00am – 11:00am Dec. 12, 19
Hillsborough Public Library
Ages 19 and up. Share in the fun and join us on Wednesdays at the library where we will try out a new, interesting hobby every week!

The Hillsborough Arena still has some ice times available for rent! Wednesdays 8pm-9pm; Saturdays 5:45pm-8pm; Sundays 8 pm-9pm

Very reasonable rates. \$160/hour or \$140/hour reduced rate for youth groups. Please contact the arena at 734-3715



Hiking Trail, Full Service Campground, Sunday Brunch

Accommodations, Restaurant, Outdoor Adventures

(506) 882-2349 Hopewell Hill, NB

www.broadleafranch.ca

Technology Assistance

10:00am – 12:00pm Every Friday
Hillsborough Public Library
All ages. Drop by the library for help with your old and new technology: including devices and/or programs.

Bennett and Albert County Health Care (BACH) Foundation

The Bennett and Albert County Health Care (BACH) Foundation helps create a healthy, vibrant community. The Foundation improves access to health care services in rural Albert County and supports programs that improve community health.

The BACH Foundation supports:

- ◆ Albert County Health and Wellness Centre in Riverside-Albert & Hillsborough satellite clinic
- ◆ Tele-Drive
- ◆ Spin Bikes at Schools
- ◆ Sistema Hillsborough
- ◆ Imagination Library
- ◆ Tele-Health
- ◆ Literacy Express
- ◆ Forest Dale Home Van
- ◆ Connecting Albert County

By donating to the BACH Foundation, you are investing in a healthier community.

(506) 882-3100

bachfoundation.com



Locations for Calendar Events

Alma

Alma Leisure Centre 8564 Main St

Riverside-Albert

Albert County Health and Wellness Centre 8 Forestdale Road 882-3100

Fundy Curling Club 16 Mill St

Riverside-Albert Recreation Centre
9 Bicentennial Rd

Forest Dale Nursing Home
5836 King St. 882-3015

Riverside Consolidated School
90 Water St.

Hillsborough

Hillsborough Elementary School
31 School Lane

Hillsborough Farmers Market
2807 Main Street

Hillsborough Golf Club 443 Golf Club Rd
734-6000

Hillsborough Kiwanis Club 47 Legion
Street 734-2886

Hillsborough Public Library 2849 Main St
734-3722 hillsborough. publicli-
brary@gnb.ca www.facebook.com/hillsboroughpubliclibrary

We are already very successful in terms of making the most of trails in our area. It's exciting to think about what we can achieve in the years to come.

Photos and text by Marc Leger. Marc is the Regional Trails Coordinator with the Regional Service Commission. Marc grew up in Riverview and has been involved with trails most of his life. Marc was involved with the development of the Fundy Footpath and currently serves as the Trailmaster, and is an executive member with the Dobson Trail and Fundy Footpath's managing organization, the Fundy Hiking Trails Association. Marc has been working professionally in trail development for the past eight years and previously worked for Parks Canada and the Trans Canada Trail. In his free time, Marc enjoys hiking, backpacking, mountain biking and paddling. Marc has backpacked many of the premier long-distance hiking trails in Canada and the US, and completed the 2,200-mile Appalachian Trail from Georgia to Maine in 2000.

Supporters of Connecting Albert County

Connecting Albert County would like to thank the following supporters.
With their help, we can spread the news of rural Albert County.

Bennett and Albert County Health Care (BACH) Foundation www.bachfoundation.com

Alaina Lockhart, MP Fundy Royal fundyroyal.ca

Albert County Pharmacy facebook.com/AlbertCountyPharmacy

Gary Steeves Insurance www.garysteevesinsurance.com

Hopewell Rocks www.thehopewellrocks.ca

Tele-Drive Albert County Inc. Tele-Drive Albert County on Facebook

Albert County Chamber of Commerce www.albertcountychamber.com

Broadleaf Guest Ranch www.broadleafranch.ca

Crooked Creek Convenience www.facebook.com/crookedcreekconvenience

East Coast Kids Child Care & Learning Centre www.eastcoastkids.ca

Farmer Brown's Greenhouse www.farmerbrowns.ca

Foods of the Fundy Valley foodsofthefundyvalley.ca

Fundy Highlands Motel and Chalets www.fundyhighlandchalets.com

OMISTA Credit Union www.OMISTA.com

Village of Hillsborough villageofhillsborough.ca

Village of Riverside-Albert www.riverside-albert.ca

Albert County Museum albertcountymuseum.com

Chipoudy Communities Revitalization Committee www.chipoudycrc.org

Forest Dale Home www.forestdalehome.ca

Jeff MacDougall, SouthEastern Mutual Insurance jeff.macdougall@semutual.nb.ca

Village of Alma villageofalma.ca

Catherine Black, Liberal Party—Albert Candidate www.facebook.com/CatherineBlackAlbert

Moranda van Geest, Green Party—Albert Candidate facebook.com/green.moranda.vangeest

Mike Holland, Progressive Conservative—Albert Candidate www.facebook.com/votemikeholland

To spread the word about your business or organization's work in rural Albert County, see connectingalbertcounty.org/advertising. We also welcome donations.